



A Very Short Introduction to Web Services

Massimo Mecella

Dipartimento di Informatica e Sistemistica ANTONIO RUBERTI
SAPIENZA Università di Roma
`mecella@dis.uniroma1.it`



BASIC CONCEPTS

e-Services, Web Services, Services ... (1) - Historically

DIPARTIMENTO DI INFORMATICA
E SISTEMISTICA ANTONIO RUBERTI



SAPIENZA
UNIVERSITÀ DI ROMA

- An e-Service is often defined as an **application accessible via the Web**, that provides a set of functionalities to businesses or individuals. What makes the e-Service vision attractive is the ability to automatically discover the e-Services that fulfill the users' needs, negotiate service contracts, and have the services delivered where and when users needs them

Guest editorial. In [VLDBJ01]

- e-Service: **an application component** provided by an organization in order to be assembled and reused in a distributed, Internet-based environment; an application component is considered as an e-Service if it is: (i) **open**, that is independent, as much as possible, of specific platforms and computing paradigms; (ii) **developed mainly for inter-organizations applications**, not only for intra-organization applications; (iii) **easily composable**; its assembling and integration in an inter-organizations application does not require the development of complex adapters. e-Application: a distributed application which integrates in a cooperative way the e-Services offered by different organizations

M. Mecella, B. Pernici: Designing Wrapper Components for e-Services in Integrating Heterogeneous Systems. In [VLDBJ01]

3

e-Services, Web Services, Services ... (2) - Historically

DIPARTIMENTO DI INFORMATICA
E SISTEMISTICA ANTONIO RUBERTI



SAPIENZA
UNIVERSITÀ DI ROMA

A Web service is a **software system** identified by a URI, whose **public interfaces** and bindings are defined and described using XML. Its definition can be discovered by **other software systems**. These systems may then **interact with** the Web service in a manner prescribed by its definition, using XML based **messages** conveyed by Internet protocols

*Web Services Architecture Requirements,
W3C Working Group Note, 11 Feb. 2004,
<http://www.w3.org/TR/wsa-reqs/>*

4

e-Services, Web Services, Services ... (3) - Historically



- Services are self-describing, open components that support rapid, low-cost composition of distributed applications. Services are offered by service providers — organizations that procure the service implementations, supply their service descriptions, and provide related technical and business support.
Since services may be offered by different enterprises and communicate over the Internet, they provide a distributed computing infrastructure for both intra and cross-enterprise application integration and collaboration.
Service descriptions are used to advertise the service capabilities, interface, behavior, and quality. Publication of such information about available services provides the necessary means for discovery, selection, binding, and composition of services. In particular, the service capability description states the conceptual purpose and expected results of the service (by using terms or concepts defined in an application-specific taxonomy). The service interface description publishes the service signature (its input/output/error parameters and message types). The (expected) behavior of a service during its execution is described by its service behavior description. Finally, the Quality of Service (QoS) description publishes important functional and nonfunctional service quality attributes [...]. Service clients (end-user organizations that use some service) and service aggregators (organizations that consolidate multiple services into a new, single service offering) utilize service descriptions to achieve their objectives.
- The application on the Web (including several aspects of the SOA) is manifested by Web services

Guest editorial. In [CACM03]

5

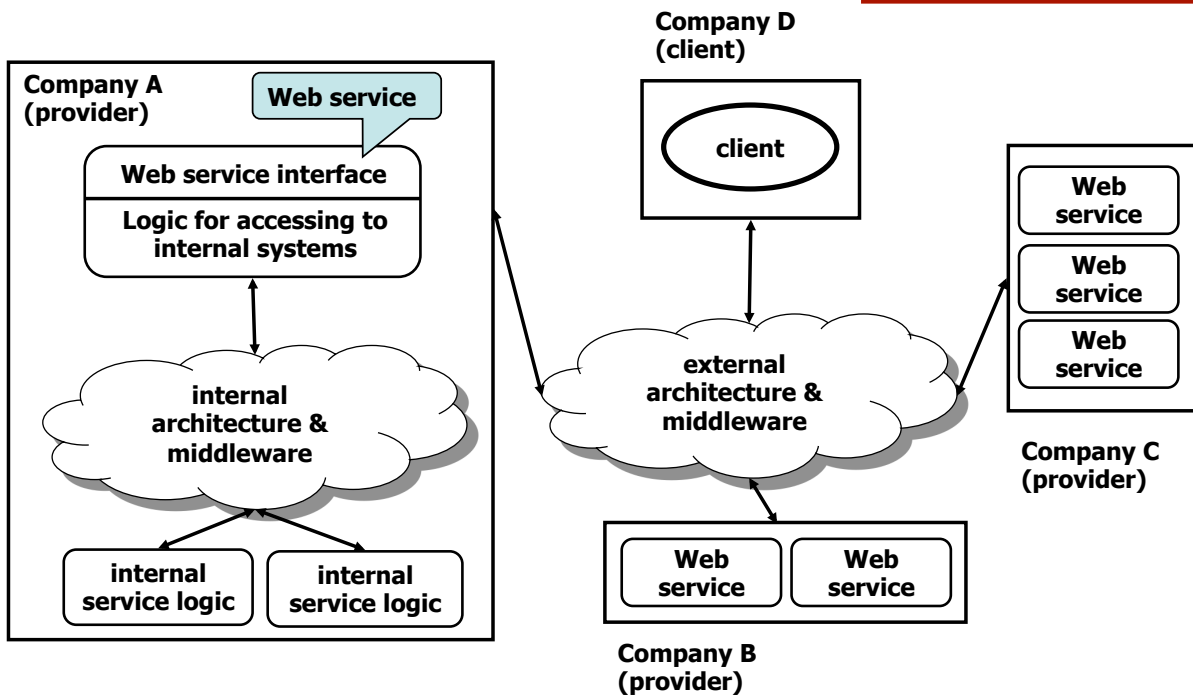
And Today ?



- e-Service
 - e-Service is the provision of a service via the Internet (the prefix "e" standing for "electronic")
 - True Web jargon, meaning just about anything done online
 - Basically whichever Web application usable by a human, through a user interface
- Web service
 - software component available on the Web, to be invoked by some other client application/component
 - A way of building Web-scale component-based distributed systems
- For building an e-Service, a designer may need to use/ invoke many Web services

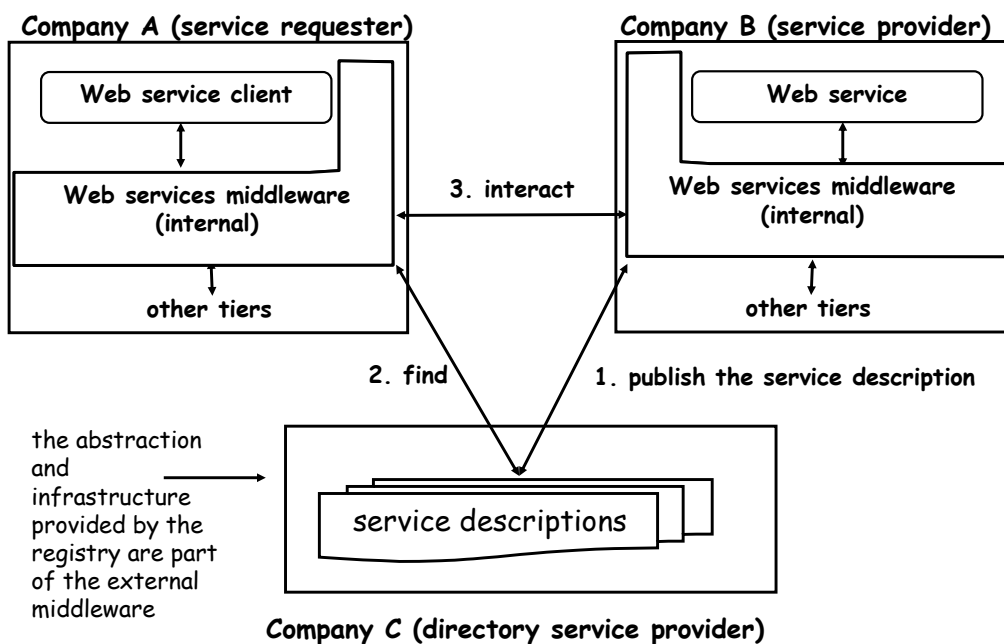
6

Two Architectures (and Middlewares) (1)



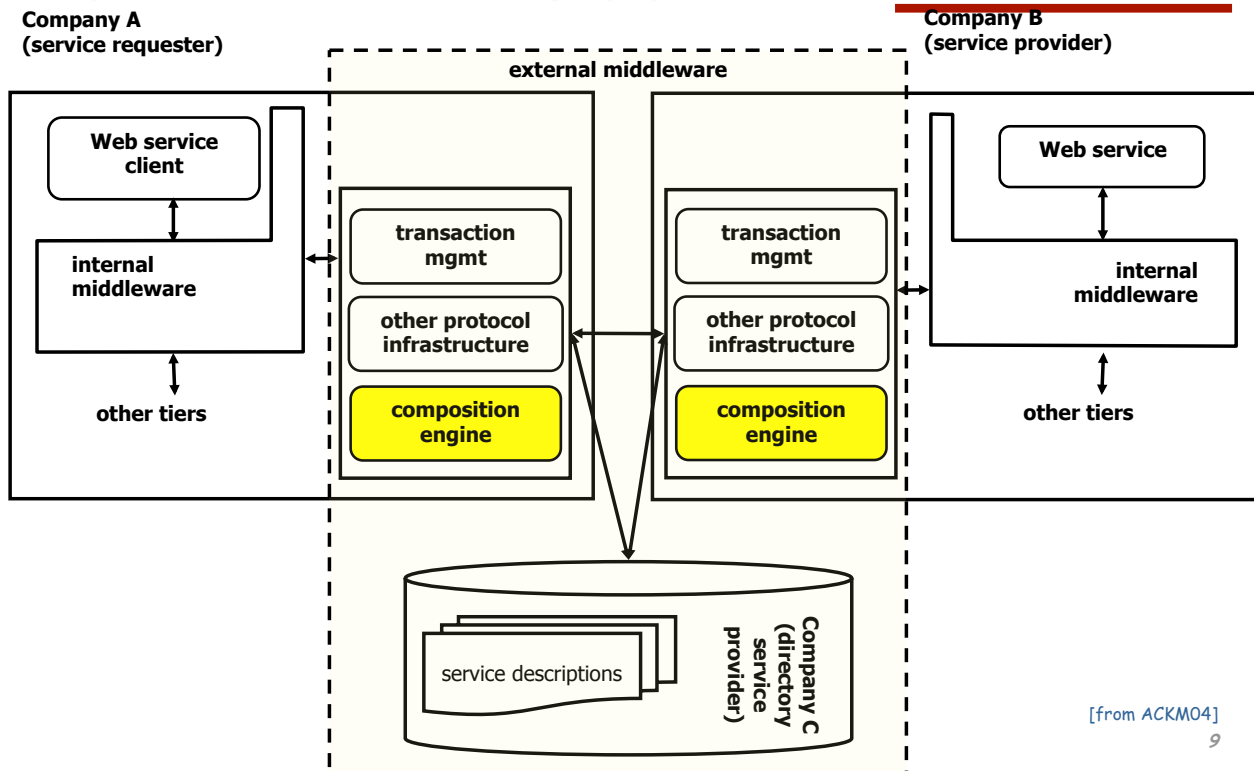
7

Two Architectures (and Middlewares) (2)



8

Two Architectures (and Middlewares) (3)



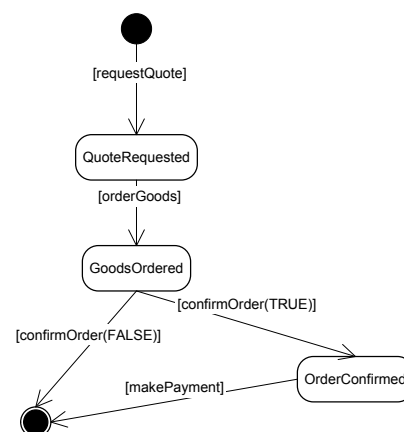
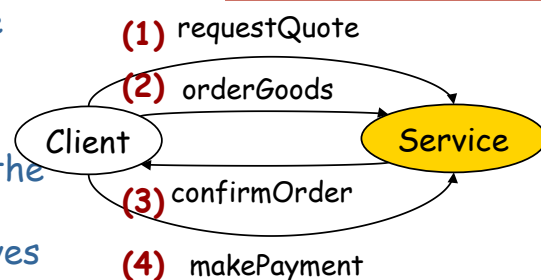
[from ACKM04]

9

Services



- A service is characterized by the set of (atomic) **operations** that it exports ...
- ... and possibly by constraints on the possible **conversations**
 - Using a service typically involves performing sequences of operations in a particular order (**conversations**)
 - During a conversation, the client typically chooses the next operation to invoke (on the basis of previous results, etc.) among the ones that the service allows at that point

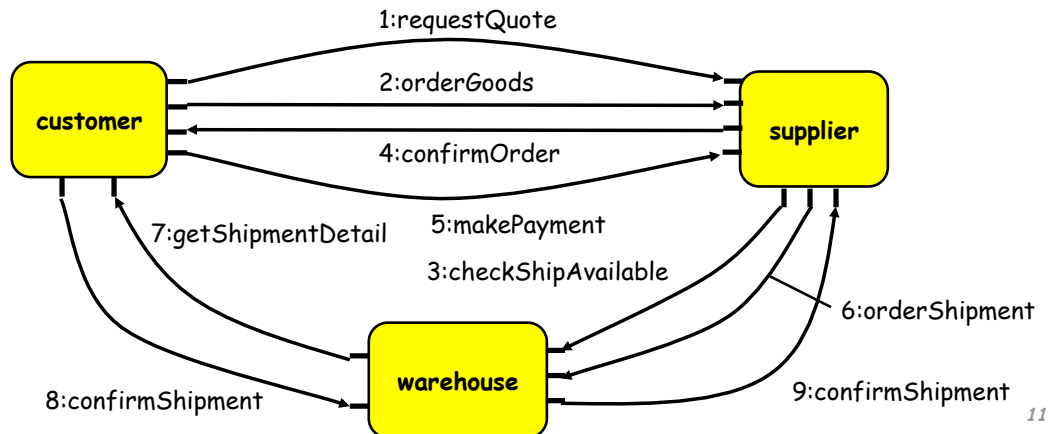


10

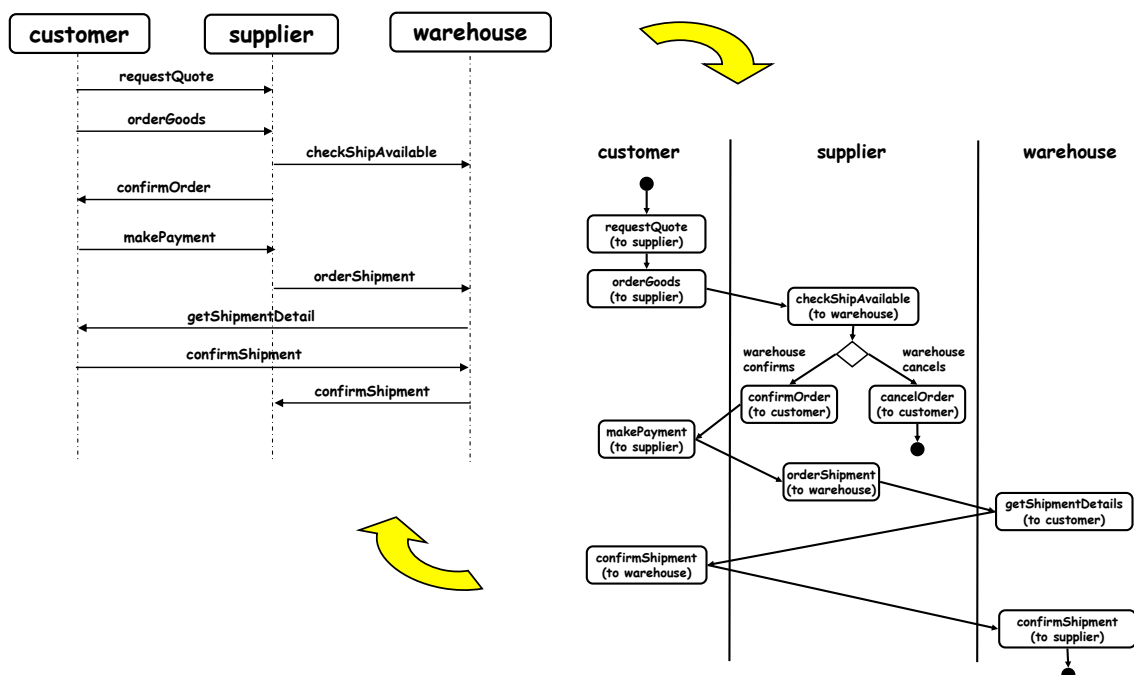
Choreography: Coordination of Conversations of N Services



- Global specification of the conversations of N peer services (i.e., multi-party conversations)
 - Roles
 - Message exchanges
 - Constraints on the order in which such exchanges should occur



Choreography: Coordination of Conversations of N Services





Composition

- Deals with the **implementation** of an application (in turn offered as a service) whose application logic involves the **invocation** of operations offered by other services
 - The new service is the **composite service**
 - The invoked services are the **component services**

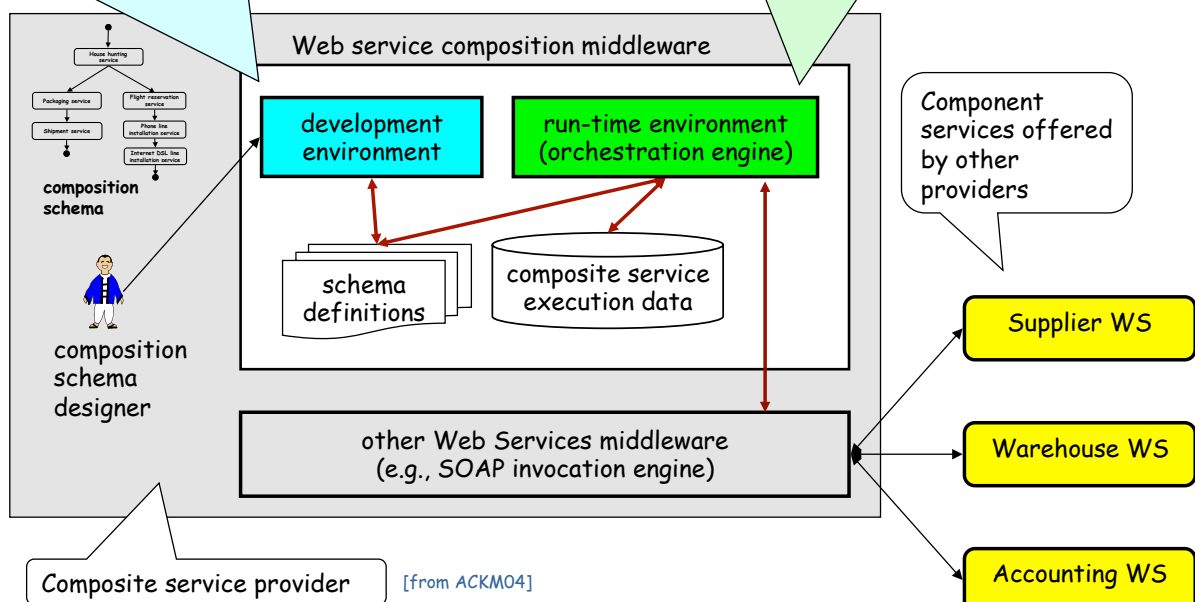
13

The Composition Engine/ Middleware



Through the development environment, a **composition schema** is **synthesized**, either manually or (semi-)automatically. A service composition model and a language (maybe characterized by a graphical and a textual representation) are adopted

Orchestration: the run-time environment executes the composite service business logic by invoking other services (through appropriate protocols)





Synthesis and Orchestration

- (Composition) Synthesis: building the specification of the composite service (i.e., the composition schema)
 - Manual
 - Automatic
- Orchestration: the run-time management of the composite service (invoking other services, scheduling the different steps, etc.)
 - Composition schema is the "program" to be executed
 - Similarities with WfMSs (Workflow Management Systems)

15



Composition Schema

- A composition schema specifies the "process" of the composite service
 - The "workflow" of the service
- Different clients, by interacting with the composite service, satisfy their specific needs (reach their goals)
 - A specific execution of the composition schema for a given client is an orchestration instance

16

Choreography (Coordination) vs. Composition (Orchestration)



- Composition is about implementing new services
 - From the point of view of the client, a composite service and a basic (i.e., implemented in a traditional programming language) one are indistinguishable
- Choreography is about global modeling of N peers, for proving correctness, design-time discovery of possible partners and run-time bindings
- N.B.: There is a strong relationship between a service internal composition and the external choreographies it can participate in
 - if A is a composite service that invokes B, the A's composition schema must reflect the coordination protocol governing A - B interactions
 - in turn, the composition schema of A determines the coordination protocols that A is able to support (i.e., the choreographies it can participate in)

17

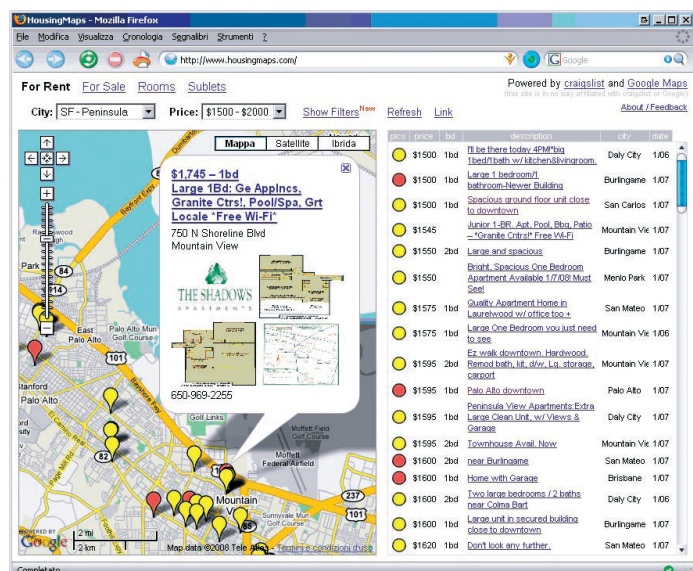
Services Mash-up (1)



Web application that combines data from one or more sources into a single integrated tool

- easy, fast integration, frequently done by access to open APIs and data sources to produce results that were not the original reason for producing the raw source data.
- E.g., cartographic data from Google Maps to add location information to real estate data, thereby creating a new and distinct e-Service that was not originally provided by either source
- Bottom-up, developers-driven approach

D. Benslimane, S. Dustdar, A. Sheth (eds.). *Services Mashups - Special Issue. IEEE Internet Computing*, vol. 12, no. 5, 2008.



Services Mash-up (2)



- Based on various technologies
 - Web services
 - SOAP
 - RESTful
 - Atom/RSS
- Basically a lightweight form of composition

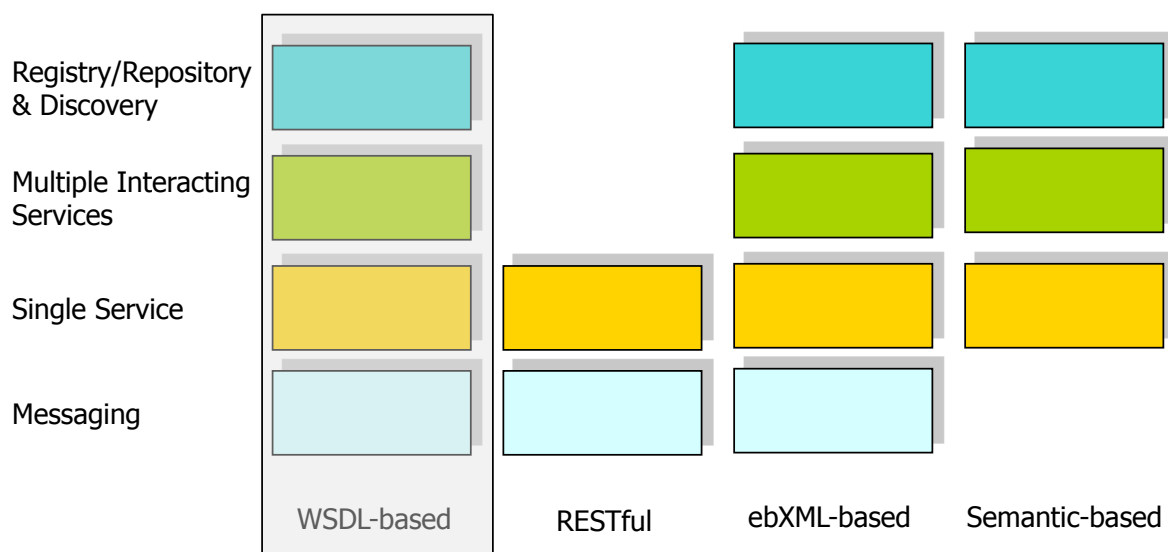
19



***RELEVANT TECHNOLOGIES
AND ABSTRACTIONS***

20

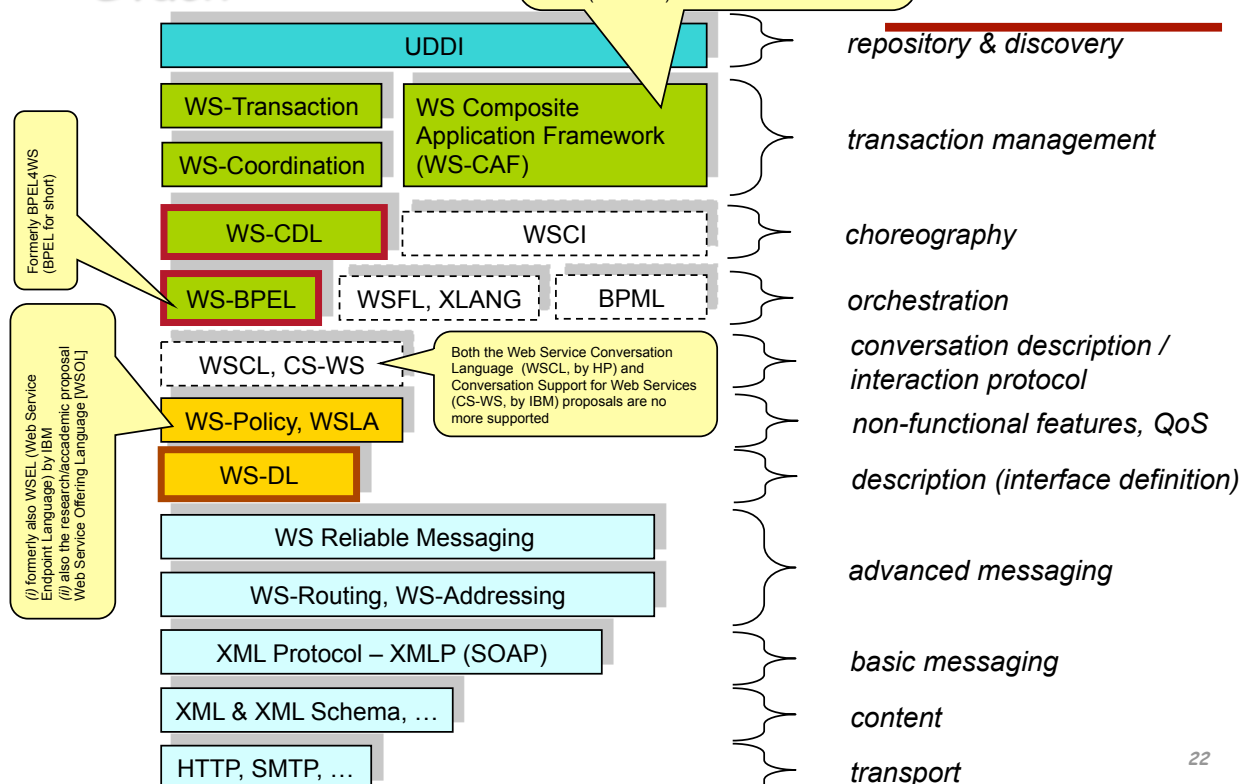
The "Stacks" of Service Technologies



21

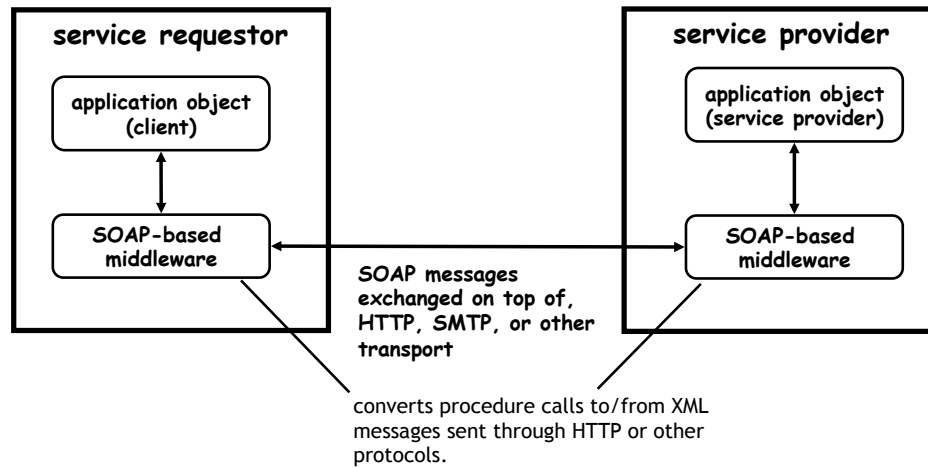
The WSDL-based "Stack"

Includes 3 specifications:
(i) Web Service Context (WS-CTX)
(ii) Web Service Coordination Framework (WS-CF)
(iii) Web Service Transaction Management (WS-TXM)



22

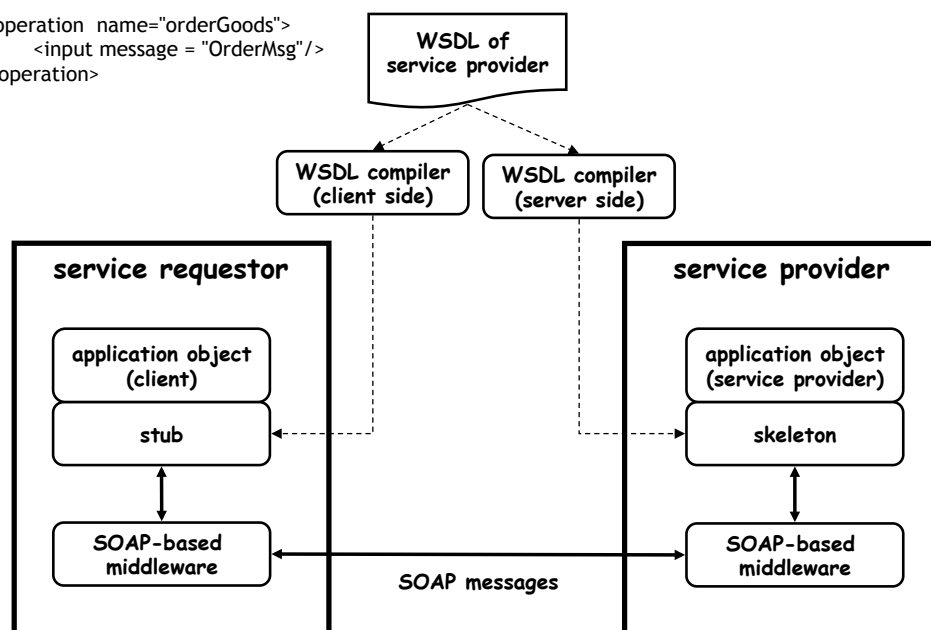
A Minimalist Infrastructure for Web Service



From Interfaces to Stub/Skeleton

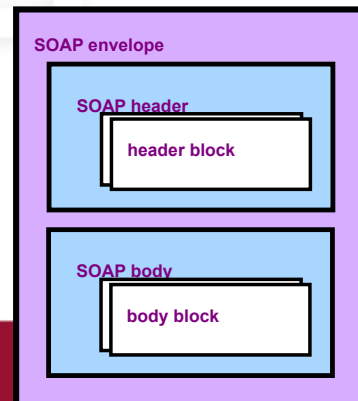
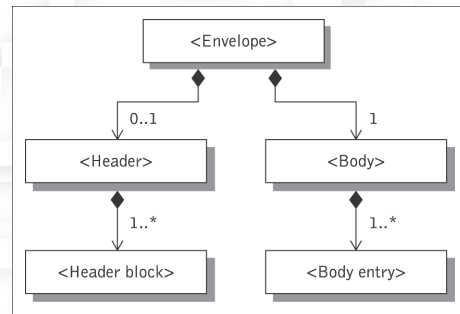


```
<operation name="orderGoods">  
  <input message="OrderMsg"/>  
</operation>
```



SOAP messages

- SOAP is based on **message exchanges**.
- Messages are seen as **envelopes** where the application encloses the data to be sent.
- A SOAP message consists of a SOAP of an `<Envelope>` element containing an optional `<Header>` and a mandatory `<Body>` element.
- The contents of these elements are application defined and not a part of the SOAP specifications.
- A SOAP `<Header>` contains blocks of information relevant to how the message is to be processed. This helps pass information in SOAP messages that is not application payload.
- The SOAP `<Body>` is where the main end-to-end information conveyed in a SOAP message must be carried.



SAPIENZA
UNIVERSITÀ DI ROMA

SOAP envelope and header

```
<env:Envelope
  xmlns:env="http://www.w3.org/2003/05/soap-envelope"
  env:encodingStyle="http://schemas.xmlsoap.org/soap/encoding/">
  .....
</env:Envelope>
```

Example of SOAP envelope

```
<env:Envelope
  xmlns:env="http://www.w3.org/2003/05/soap-envelope" >
  ...
  <env:Header>
    <tx:transaction-id
      xmlns:tx="http://www.transaction.com/transaction"
      env:mustUnderstand="true">
      512
    </tx:transaction-id>
    <notary:token xmlns:notary="http://www.notarization-services.com/token"
      env:mustUnderstand="true">
      GRAAL-5YF3
    </notary:token>
  </env:Header>
  .....
</env:Envelope>
```

Example of SOAP header



SAPIENZA
UNIVERSITÀ DI ROMA

The SOAP Body

- The SOAP body is the area of the SOAP message, where the application specific XML data (payload) being exchanged in the message is placed.
- The **<Body> element** must be present and is an immediate child of the envelope. It may contain a number of child elements, called body entries, but it may also be empty. The **<Body> element** contains either of the following:
 - **Application-specific data** is the information that is exchanged with a Web service. The SOAP <Body> is where the method call information and its related arguments are encoded. It is where the response to a method call is placed, and where error information can be stored.
 - A **fault message** is used only when an error occurs.
- A SOAP message may carry either application-specific data or a fault, but not both.



SAPIENZA
UNIVERSITÀ DI ROMA

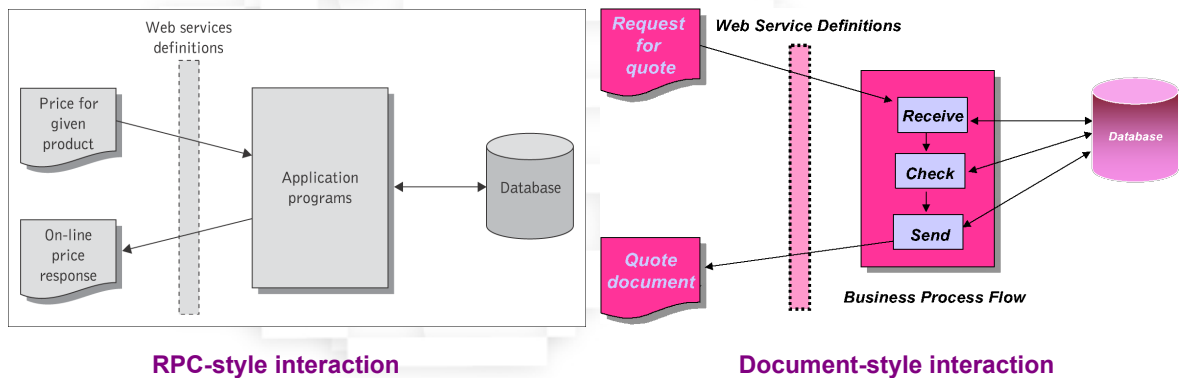
Example SOAP Message



SAPIENZA
UNIVERSITÀ DI ROMA

The SOAP Communication Model

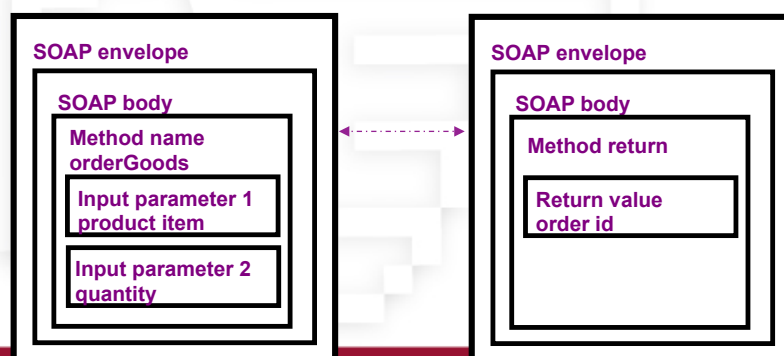
- SOAP supports two possible communication styles:
 - remote procedure call (RPC) and
 - document (or message).



SAPIENZA
UNIVERSITÀ DI ROMA

RPC-style SOAP Services

- A remote procedure call (RPC)-style Web service appears as a remote object to a client application. The interaction between a client and an RPC-style Web service centers around a service-specific interface. Clients express their request as a method call with a set of arguments, which returns a response containing a return value.



SAPIENZA
UNIVERSITÀ DI ROMA

RPC-style web services

```
<env:Envelope
  xmlns:SOAP="http://www.w3.org/2003/05/soap-envelope"
  xmlns:m="http://www.plastics_supply.com/product-prices">
  <env:Header>
    <tx:Transaction-id
      xmlns:t="http://www.transaction.com/transactions"
      env:mustUnderstand='1'>
      512
    </tx:Transaction-id>
  </env:Header>
  <env:Body>
    <m:GetProductPrice>
      <product-id 450R60P </product-id >
    </m:GetProductPrice >
  </env:Body>
</env:Envelope>
```

Example of RPC-style SOAP body

Example of RPC-style SOAP response message

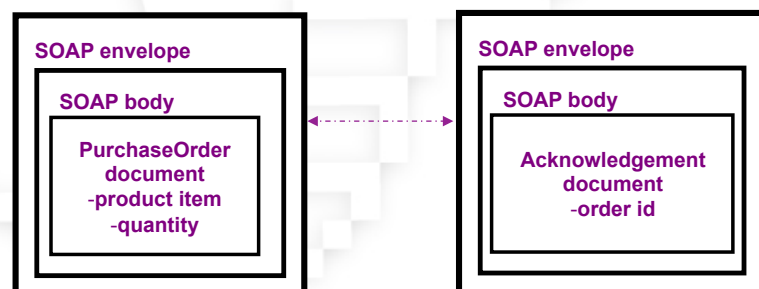
```
<env:Envelope
  xmlns:SOAP="http://www.w3.org/2003/05/soap-envelope"
  xmlns:m="http://www.plastics_supply.com/product-prices">
  <env:Header>
    <!-- - Optional context information -->
  </env:Header>
  <env:Body>
    <m:GetProductPriceResponse>
      <product-price 134.32 </product-price>
    </m:GetProductPriceResponse>
  </env:Body>
</env:Envelope>
```



SAPIENZA
UNIVERSITÀ DI ROMA

Document (Message)-style SOAP Services

- In the document-style of messaging, the SOAP <Body> contains an XML document fragment. The <Body> element reflects no explicit XML structure.
- The SOAP run-time environment accepts the SOAP <Body> element as it stands and hands it over to the application it is destined for unchanged. There may or may not be a response associated with this message.



SAPIENZA
UNIVERSITÀ DI ROMA

Example of document-style SOAP body

```
<env:Envelope
  xmlns:SOAP="http://www.w3.org/2003/05/soap-envelope">

  <env:Header>
    <tx:Transaction-id
      xmlns:t="http://www.transaction.com/transactions"
      env:mustUnderstand='1'>
      512
    </tx:Transaction-id>
  </env:Header>
  <env:Body>
    <po:PurchaseOrder orderDate="2004-12-02"
      xmlns:m="http://www.plastics_supply.com/POs">
      <po:from>
        <po:accountName> RightPlastics </po:accountName>
        <po:accountNumber> PSC-0343-02 </po:accountNumber>
      </po:from>
      <po:to>
        <po:supplierName> Plastic Supplies Inc. </po:supplierName>
        <po:supplierAddress> Yara Valley Melbourne </po:supplierAddress>
      </po:to>
      <po:product>
        <po:product-name> injection molder </po:product-name>
        <po:product-model> G-100T </po:product-model>
        <po:quantity> 2 </po:quantity>
      </po:product>
    </ po:PurchaseOrder >
  </env:Body>
</env:Envelope>
```

Example of document-style SOAP body



SAPIENZA
UNIVERSITÀ DI ROMA

SOAP Fault element

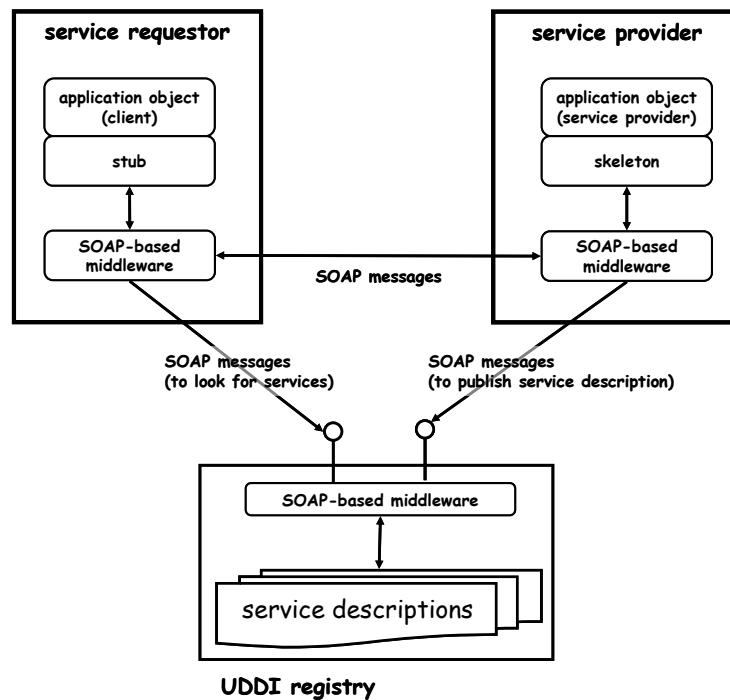
- SOAP provides a model for handling faults arise.
- It distinguishes between the conditions that result in a fault, and the ability to signal that fault to the originator of the faulty message or another node. The SOAP <Body> is the place where fault information is placed.

```
<env:Envelope
  xmlns:SOAP="http://www.w3.org/2003/05/soap-envelope"
  xmlns:m="http://www.plastics_supply.com/product-prices">
  <env:Header>
    <tx:Transaction-id
      xmlns:t="http://www.transaction.com/transactions"
      env:mustUnderstand='1'>
      512
    </tx:Transaction-id>
  </env:Header>
  <env:Body>
    <env:Fault>
      <env:Code>
        <env:Value>env:Sender</env:Value>
        <env:Subcode>
          <env:Value> m:InvalidPurchaseOrder </env:Value>
        </env:Subcode>
      </env:Code>
      <env:Reason>
        <env:Text xml:lang="en-UK"> Specified product did not exist </env:Text>
      </env:Reason>
      <env:Detail>
        <err:myFaultDetails
          xmlns:err="http://www.plastics_supply.com/faults">
          <err:message> Product number contains invalid characters </err:message>
          <err:errorCode> 129 </err:errorCode>
        </err:myFaultDetails>
      </env:Detail>
    </env:Fault>
  </env:Body>
</env:Envelope>
```

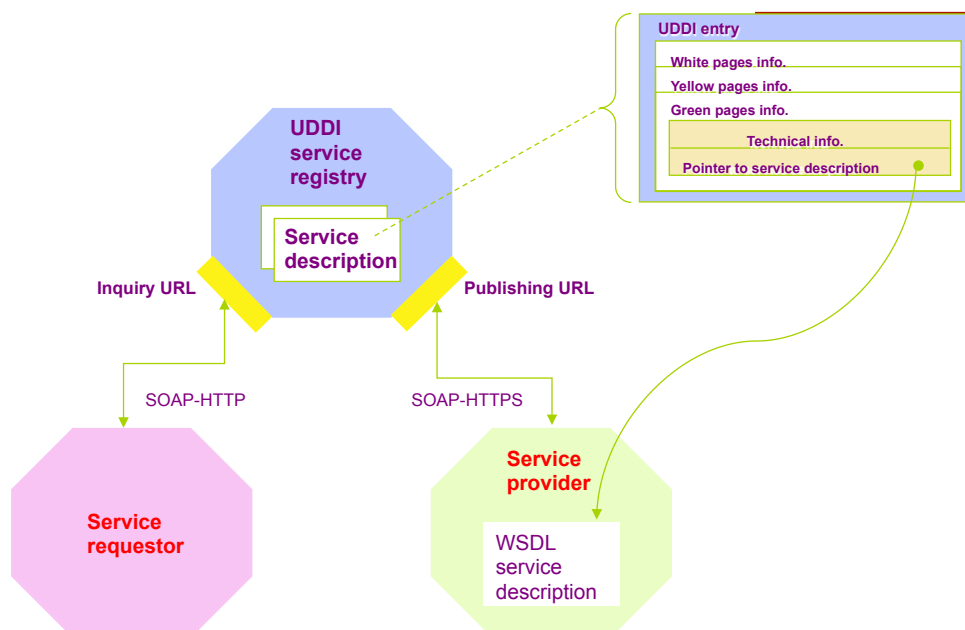


SAPIENZA
UNIVERSITÀ DI ROMA

Registry



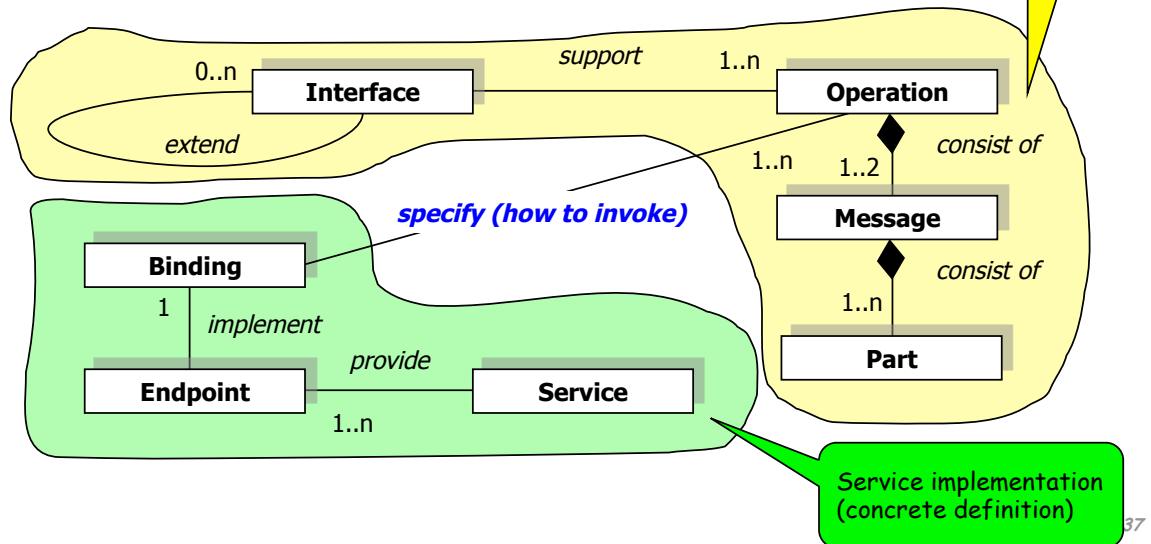
UDDI and WSDL



Web Service Definition Language (WS-DL)

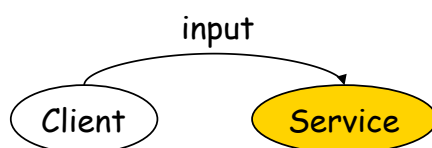


- WS-DL provides a framework for defining
 - Interface: operations and input/output formal parameters
 - Access specification: protocol bindings (e.g., SOAP)
 - Endpoint: the location of service

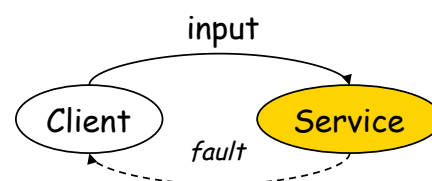


37

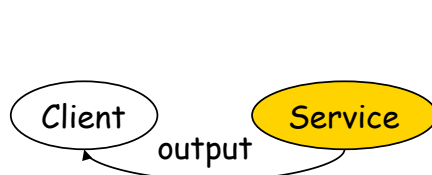
Message Exchange Patterns (1)



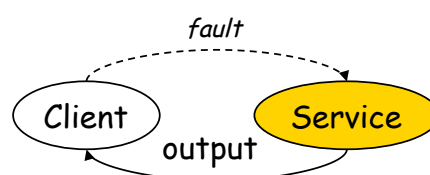
in-only (no faults)



robust in-only (message triggers fault)

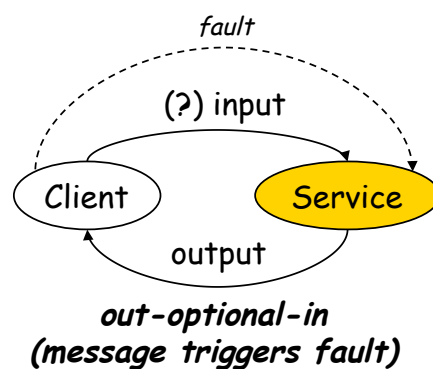
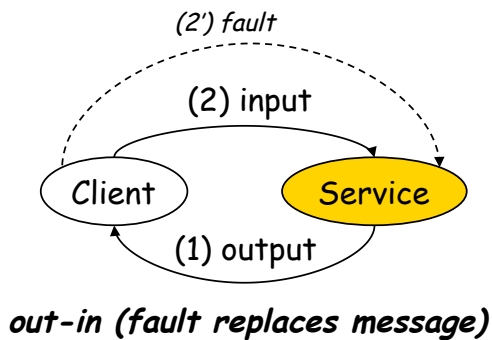
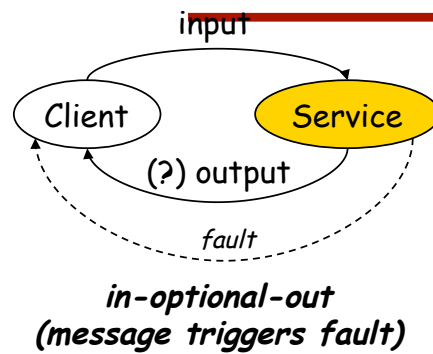
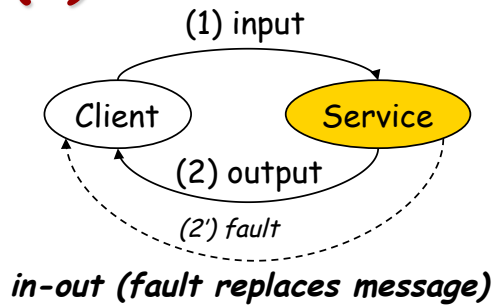


out-only (no faults)



robust out-only (message triggers fault)

Message Exchange Patterns (2)



39

An Example (1)



Definition of a message and its formal parameters

```
<definitions ... >
  <types>
    <element name="ListOfSong_Type">
      <complexType><sequence>
        <element minOccurs="0" maxOccurs="unbound"
          name="SongTitle" type="xs:string"/>
      </sequence></complexType>
    </element>
    <element name="SearchByTitleRequest">
      <complexType><all>
        <element name="containedInTitle"
          type="xs:string"/>
      </all></complexType>
    </element>
    <element name="SearchByTitleResponse">
      <complexType><all>
        <element name="matchingSongs"
          xsi:type="ListOfSong_Type"/>
      </all></complexType>
    </element>
```

40



An Example (2)

```
<element name="SearchByAuthorRequest">
  <complexType><all>
    <element name="authorName"
      type="xs:string"/>
  </all></complexType>
</element>
<element name="SearchByAuthorResponse">
  <complexType><all>
    <element name="matchingSongs"
      xsi:type="ListOfSong_Type"/>
  </all></complexType>
</element>
<element name="ListenRequest">
  <complexType><all>
    <element name="selectedSong"
      type="xs:string"/>
  </all></complexType>
</element>
```

41



An Example (3)

```
<element name="ListenResponse">
  <complexType><all>
    <element name="MP3fileURL" type="xs:string"/>
  </all></complexType>
</element>
<element name="ErrorMessage">
  <complexType><all>
    <element name="cause" type="xs:string"/>
  </all></complexType>
</element>
</types>
```

42

An Example (4)

Definition of a service interface

DIPARTIMENTO DI INFORMATICA
E SISTEMISTICA ANTONIO RUBERTI



SAPIENZA
UNIVERSITÀ DI ROMA

```
<interface name="MP3ServiceType">
  <operation name="search_by_title" pattern="in-out">
    <input message="SearchByTitleRequest"/>
    <output message="SearchByTitleResponse"/>
    <outfault message="ErrorMessage"/>
  </operation>
  <operation name="search_by_author" pattern="in-out">
    <input message="SearchByAuthorRequest"/>
    <output message="SearchByAuthorResponse"/>
    <outfault message="ErrorMessage"/>
  </operation>
  <operation name="listen" pattern="in-out">
    <input message="ListenRequest"/>
    <output message="ListenResponse"/>
    <outfault message="ErrorMessage"/>
  </operation>
</interface>
</definitions>
```

Definition of an operation and its message exchange pattern

43

Transition Systems

DIPARTIMENTO DI INFORMATICA
E SISTEMISTICA ANTONIO RUBERTI



SAPIENZA
UNIVERSITÀ DI ROMA

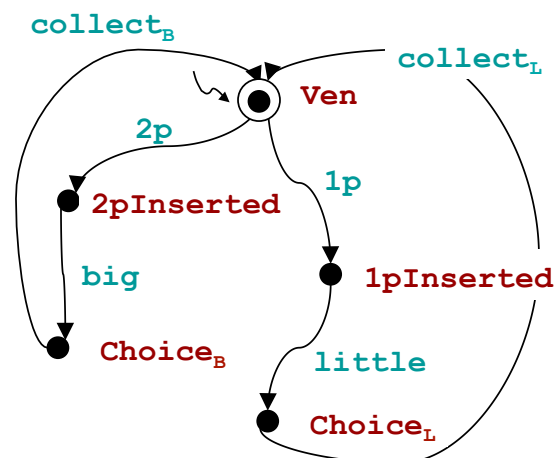
- A transition system (TS)

is a tuple

$T = \langle A, S, S^0, \delta, F \rangle$

where:

- A is the set of actions
- S is the set of states
- $S^0 \in S$ is the set of initial states
- $\delta \subseteq S \times A \times S$ is the transition relation
- $F \subseteq S$ is the set of final states

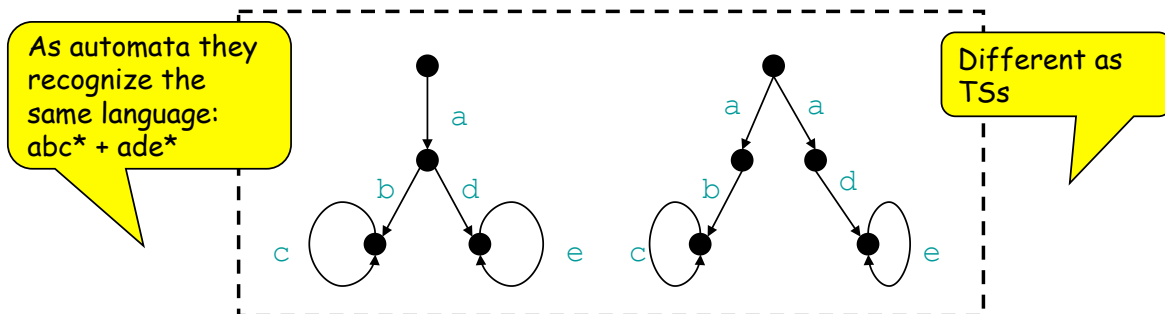


44

Automata vs. Transition Systems



- Automata
 - define sets of runs (or traces or strings): (finite) length sequences of actions
- TSs
 - ... but I can be interested also in the alternatives "encountered" during runs, as they represent client's "choice points"



45

WS-DL is the Set of Actions



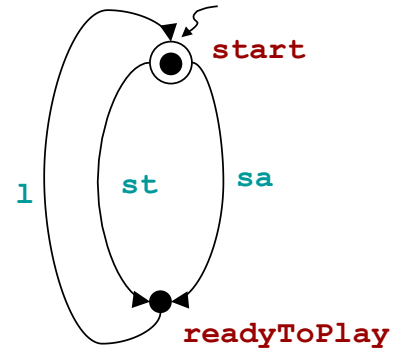
- A message exchange pattern (and the related operation) represents an **interaction** with the service client
 - an action that the service can perform by interacting with its client
- Abstracting from formal parameters, we can associate a different symbol to each operation ...
- ... thus obtaining the alphabet of actions

46



An Example

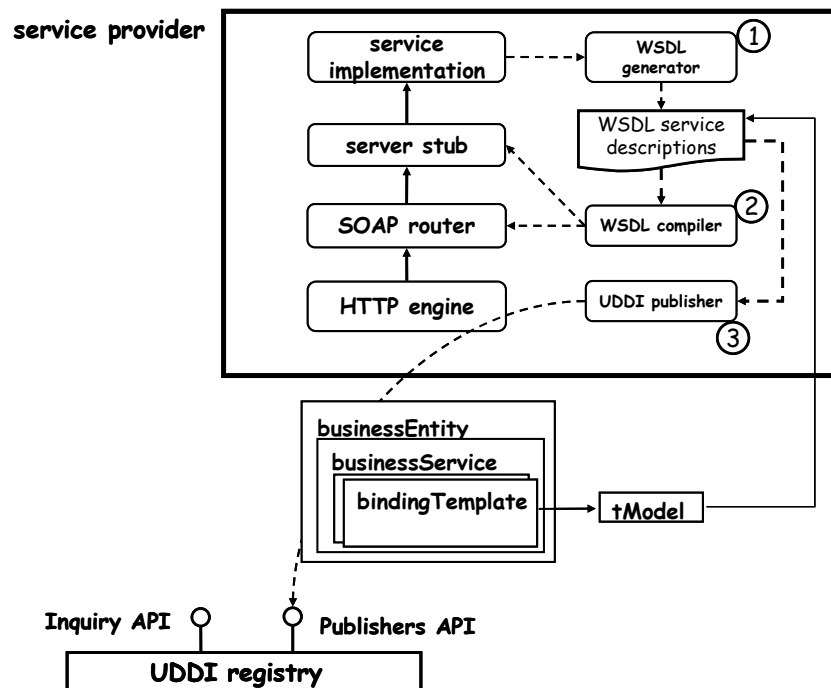
- The `MP3ServiceInterface` defines 3 actions:
 - `search_by_title / st`
 - `search_by_author / sa`
 - `listen / l`
- Formally $A = \{st, sa, l\}$



47



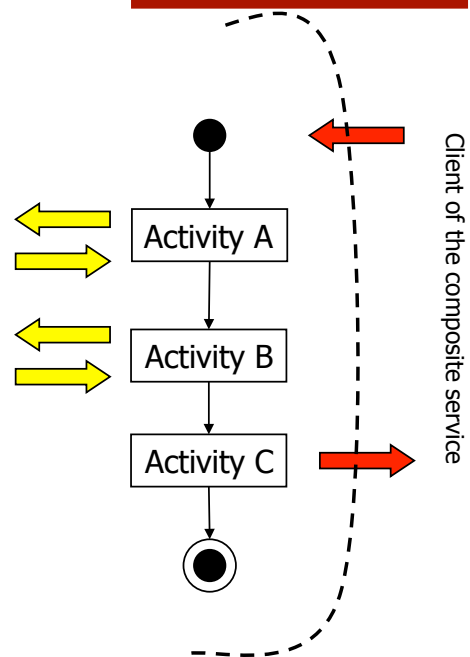
Putting All Together



Business Process Execution Language for Web Services (WS-BPEL)



- Allows specification of composition schemas of Web Services
 - Business processes as coordinated interactions of Web Services
 - Business processes as Web Services
- Allows abstract and executable processes
- Influenced from
 - Traditional flow models
 - Structured programming
 - Successor of WSFL and XLANG
- Component Web Services described in WS-DL (v1.1)



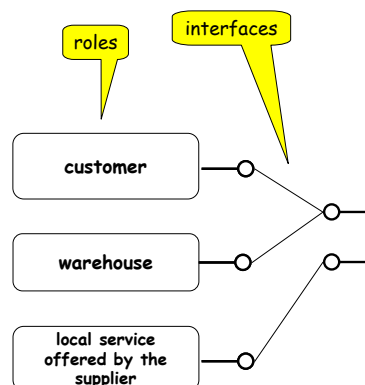
49

WS-BPEL Specification

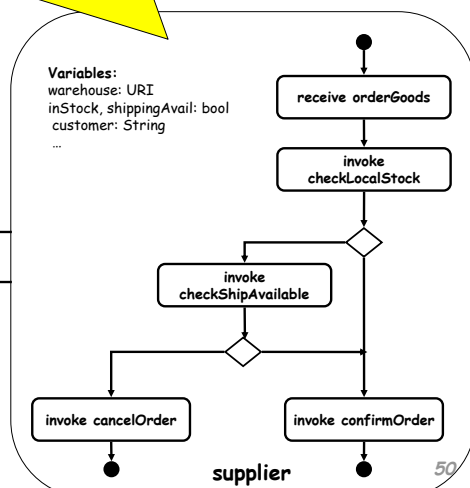


An XML document specifying

- Roles exchanging messages with the composite service/process
- The (WSDL) interfaces supported by such roles
- The orchestration of the process
 - Variables and data transfer
 - Exception handling
 - Correlation information



Orchestration
- variables and data transfers,
- exception handling,
- correlation information (for instance routing)



50

Process Model (Activities)



- Primitive
 - **invoke**: to invoke a Web Service (in-out) operation
 - **receive**: to wait for a message from an external source
 - **reply**: to reply to an external source message
 - **wait**: to remain idle for a given time period
 - **assign**: to copy data from one variable to another
 - **throw**: to raise exception errors
 - **empty**: to do nothing
- Structured
 - **sequence**: sequential order
 - **switch**: conditional routing
 - **while**: loop iteration
 - **pick**: choices based on events
 - **flow**: concurrent execution (synchronized by **links**)
 - **scope**: to group activities to be treated "transactionally" (managed by the same fault handler, within the same transactional context)

A link connects exactly one source activity S to exactly one target activity T; T starts only after S ends. An activity can have multiple incoming (possibly with join conditions) and outgoing links. Links can be guarded

51

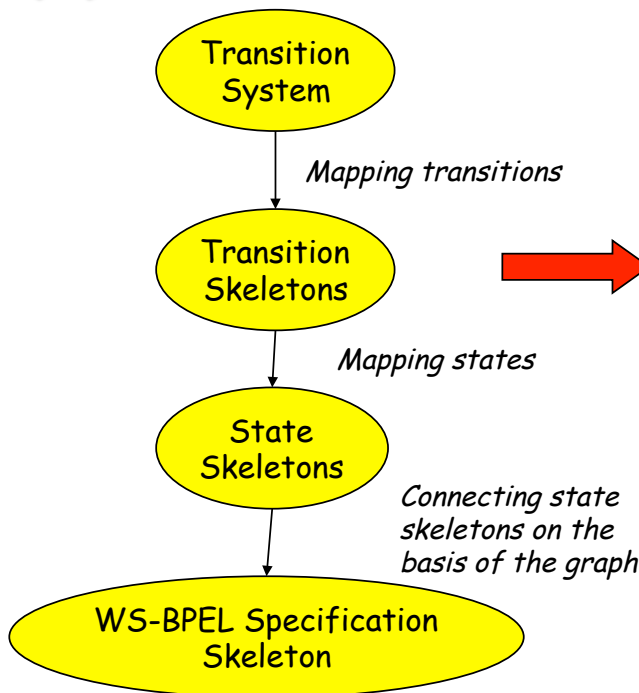
Process Model (Data Manipulation and Exception Handling)



- Blackboard approach
 - a blackboard of variables is associated to each orchestration instance (i.e., a shared memory within an orchestration instance)
 - variables are not initialized at the beginning; they are modified (read/write) by assignments and messages
 - manipulation through XPath
- Try-catch-throw approach
 - definition of fault handlers
 - ... but also event handlers and compensation handlers (for managing transactionality as in the SAGA model)

52

From a TS to WS-BPEL (1)



```
<process name = "...">
  <partnerLinks>
    ...
  </partnerLinks>
  <variables>
    ...
  </variables>
  <flow>
    <links>
      ...
    </links>
    <!-- state skel. -->
    ...
    <!-- state skel. -->
  </flow>
</process>
```

53

From a TS to WS-BPEL (2)



Intuition [Baina et al CAISE04, Berardi et al VLDB-TES04]

1. Each transition corresponds to a WS-BPEL pattern consisting of (i) an `<onMessage>` operation (in order to wait for the input from the client of the composite service), (ii) followed by the effective logic of the transition, and then (iii) a final operation for returning the result to the client. Of course both before the effective logic and before returning the result, messages should be copied forth and back in appropriate variables
2. All the transitions originating from the same state are collected in a `<pick>` operation, having as many `<onMessage>` clauses as transitions originating from the state
3. The WS-BPEL file is built visiting all the nodes of the graph, starting from the initial state and applying the previous rules.

N.B.: (1) and (2) works for in-out interactions (the ones shown in the following). Simple modifications are needed for in-only, robust-in-only and in-optional-out. The other kinds of interactions implies a proactive behaviour of the composite service, possibly guarded by `<onAlarm>` blocks.

54



Transition Skeletons

```

<onMessage ... >
  <sequence>
    <assign>
      <copy>
        <from variable="input" ... />
        <to variable="transitionData" ... />
      </copy>
    </assign>
    <!-- logic of the transition -->
    <assign>
      <copy>
        <from variable="transitionData" ... />
        <to variable="output" ... />
      </copy>
    </assign>
    <reply ... />
  </sequence>
</onMessage>

```

55



State Skeletons

- N transitions from state S_i are mapped onto:

```

<pick name = "Si">
  <!-- transition #1 -->
  <onMessage ... >
    <!-- transition skeleton -->
  </onMessage>
  ... ..
  <!-- transition #N -->
  <onMessage ... >
    <!-- transition skeleton -->
  </onMessage>
</pick>

```

56



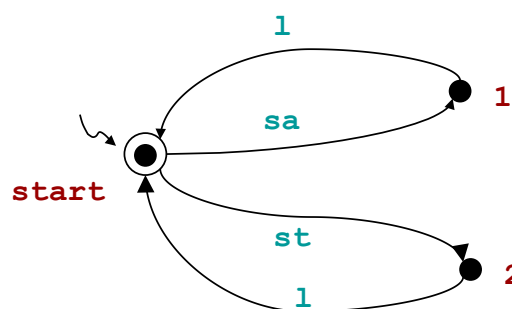
Mapping the TS

- All the `<pick>` blocks are enclosed in a surrounding `<flow>`; the dependencies are modeled as `<link>`s
 - `<link>`s are controlled by specific variables s_i -to- s_j that are set to TRUE iff the transition $S_i \rightarrow S_j$ is executed
 - Each state skeleton has many outgoing `<link>`s as states connected in output, each going to the appropriate `<pick>` block
 - Transitions going back into the initial state should not be considered, as they can be represented as the start of a new instance

57



An Example (1)



```

<partnerLinks>
  <!-- The "client" role represents the requester of this composite service -->
  <partnerLink name="client"
    partnerLinkType="tns:Transition"
    myRole="MP3ServiceTypeProvider"
    partnerRole="MP3ServiceTypeRequester"/>
  <partnerLink name="service"
    partnerLinkType="nws:MP3CompositeService"
    myRole="MP3ServiceTypeRequester"
    partnerRole="MP3ServiceTypeProvider"/>
</partnerLinks>

```

58



An Example (2)

```
<variables>
  <variable name="input" messageType="tns:listen_request"/>
  <variable name="output" messageType="tns:listen_response"/>
  <variable name="dataIn" messageType="tns:listen_request"/>
  <variable name="dataOut" messageType="tns:listen_response"/>
</variables>

  <pick>
    <onMessage partnerLink="client"
      portType="tns:MP3ServiceType"
      operation="listen"
      variable="input">
      <sequence>
        <assign>
          <copy>
            <from variable="input" part="selectedSong"/>
            <to variable="dataIn" part="selectedSong"/>
          </copy>
        </assign>
        ...
        <assign>
          <copy>
            <from variable="dataOut" part="MP3FileURL"/>
            <to variable="output" part="MP3FileURL"/>
          </copy>
        </assign>
        <reply name="replyOutput"
          partnerLink="client"
          portType="tns:MP3ServiceType"
          operation="listen"
          variable="output"/>
      </sequence>
    </onMessage>
    ...
  </pick>
```

59

An Example (3)

```
<process suppressJoinFailure = "no">
  <flow>
    <links>
      <link name="start-to-1"/>
      <link name="start-to-2"/>
    </links>

    <pick createInstance = "yes">
      <onMessage="sa">
        <sequence>
          <copy>...</copy>
          ...
          <copy>...</copy>
          <reply ... />
        </sequence>
      </onMessage>
      <onMessage="st">
        <sequence>
          <copy>...</copy>
          ...
          <copy>...</copy>
          <reply ... />
        </sequence>
      </onMessage>
      <source linkName="start-to-1" transitionCondition = "bpws:getVariableData('start-to-1') = 'TRUE' " />
      <source linkName="start-to-2" transitionCondition = "bpws:getVariableData('start-to-2') = 'TRUE' " />
    </pick>
```

A new instance is created in the initial state. This resolve also the presence of the cycles without the need of enclosing `<while>`

The `<sa>` transition skeleton should set variables:

```
start-to-1 = TRUE
start-to-2 = FALSE
```

The `<st>` transition skeleton should set variables:

```
start-to-1 = FALSE
start-to-2 = TRUE
```

60



An Example (4)

```
<pick>
  <onMessage="!">
    <sequence>
      <copy>...</copy>
      ...
      <copy>...</copy>
      <reply ... />
    </sequence>
  </onMessage>
  <target linkName="start-to-1" />
</pick>
<pick>
  <onMessage="!">
    <sequence>
      <copy>...</copy>
      ...
      <copy>...</copy>
      <reply ... />
    </sequence>
  </onMessage>
  <target linkName="start-to-2" />
</pick>
</process>
```

61

Choreography

(As Reported in Literature: Classical Ballet Style)



- Consider a dance with more than one dancer
 - Each dancer has a set of steps that they will perform. They orchestrate their own steps because they are in complete control of their domain (their body)
 - A choreographer ensures that the steps all of the dancers make is according to some overall, pre-defined scheme. This is a choreography
 - The dancers have no control over the steps they make: their steps must conform to the choreography
 - The dancers have a single view-point of the dance
 - The choreographer has a multi-party or global view-point of the dance

62

Choreography

(A Possible Evolution: Jam Session Style)



- Consider a jazz band with many players
 - There is a rhythm and a main theme. This is the choreography
 - Each player executes his piece by improvising variations over the main theme and following the given rhythm
 - The players still have a single view-point of the music; in addition they have full control over the music they play
 - There is a multi-party or global view-point of the music, but this is only a set of "sketchy" guidelines

63

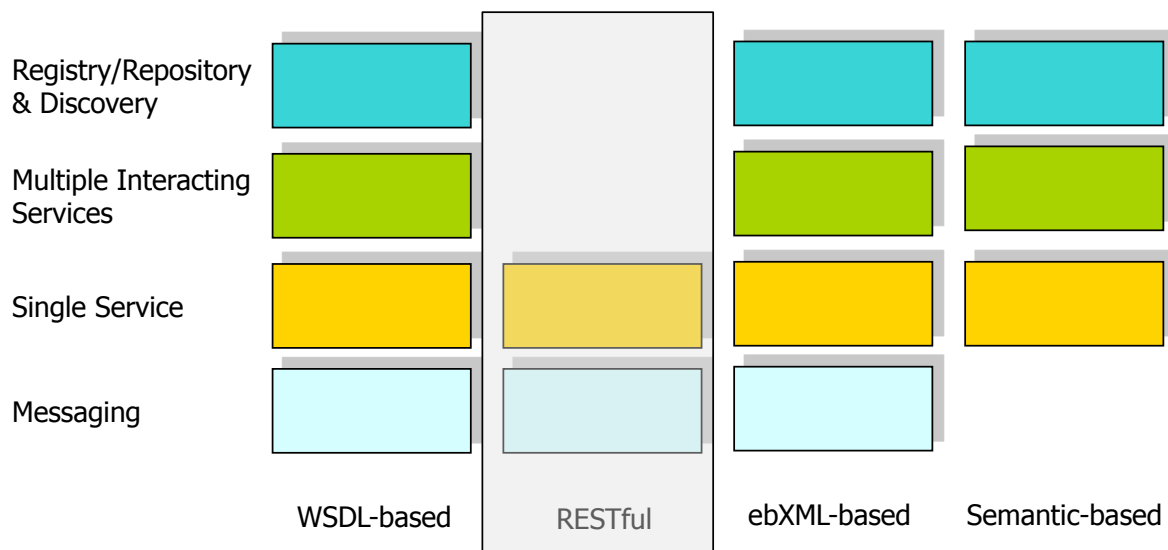
WS-BPEL vs. WS-CDL



- Orchestration/WS-BPEL is about describing and executing a single peer
- Choreography/WS-CDL is about describing and guiding a global model (N peers)
- You should derive the single peer from the global model by projecting based on participant

64

The "Stacks" of Service Technologies



65

RESTful Services (1)



- REST refers to simple application interfaces transmitting data over HTTP without additional layers as SOAP
 - Web page meant to be consumed by program as opposed to a Web browser or similar UI tool
 - require an architectural style to make sense of them (the REST one), because there's no smart human being on the client end to keep track

66



RESTful Services (2)

- Metaphor based on nouns and verbs
 - URIs ~ nouns
 - Verbs describe actions that are applicable to nouns
 - GET -- retrieve information / READ, SELECT
 - POST (PUT) - add/update new information / CREATE, INSERT, UPDATE
 - DELETE -- discard information / DELETE
- State means the application/session state, maintained as part of the content transferred (in XML) from client to server back to client

67

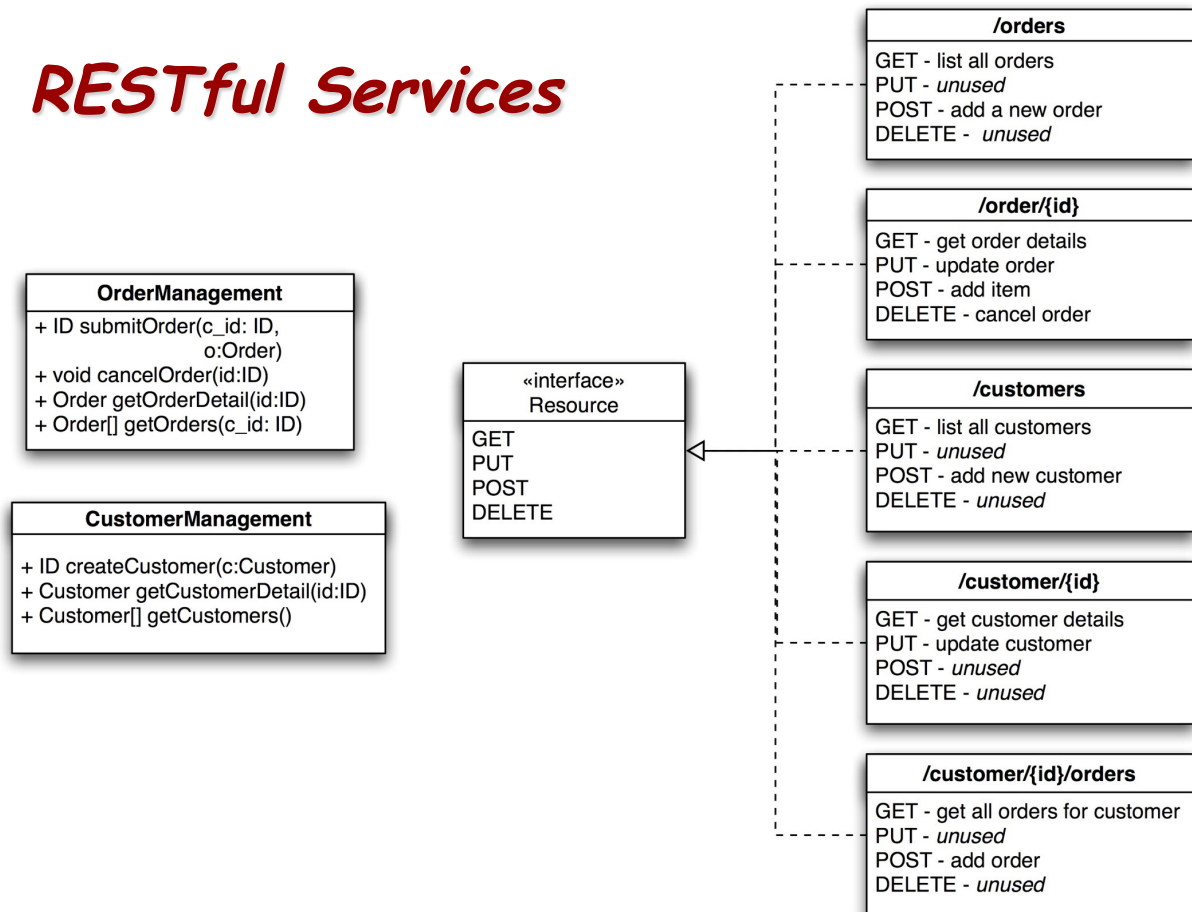


RESTful Services (3)

- REST is, in a sense, a kind of RPC, except the methods have been defined in advance
 - Consider the stock example of a remote procedure called "getStockPrice"
 - It's not clear what it means to GET, PUT, and POST to something called "getStockPrice"
 - But if we change the name from "getStockPrice" to "CurrentStockPrice" all is well !!

68

RESTful Services



RESTful Services (4)



DIPARTIMENTO DI INFORMATICA
E SISTEMISTICA ANTONIO RUBERTI

SAPIENZA
UNIVERSITÀ DI ROMA

- REST is incompatible with "end-point" RPC -- Either you address data objects or you address "software components"
 - REST does the former
 - End-point RPC does the latter

```
POST /purchase_orders HTTP/1.1
Host: accounting.mycompany.com
content-type:
application/purchase-order+xml
....
<po>...</po>
```

```
POST /generic_message_handler
content-type: application/SOAP+XML
<soap:envelope>
  <soap:body>
    <submit-purchase-order>
      <destination>accounting.mycompany.com
      </destination>
      <po>...</po>
    </submit-purchase-order>
  </soap:body>
</soap:envelope>
```

Example (1)



Operation	HTTP Request	HTTP Response	Java Technology Method
Create	<pre>POST /restfulwebservice-war/poservice/ HTTP/1.0 Accept: */* Connection: close Content-Type: text/xml Content-Length: 618 Pragma: no-cache <tns:PurchaseOrderDocument xmlns:tns="urn:PurchaseOrderDocument"> <billTo> <street>1 Main Street</street> <city>Beverly Hills</city> <state>CA</state> <zipCode>90210</zipCode> </billTo> <createDate>2004-03-27T12:21:02.055-05:00</createDate> <poID>ABC-CO-19282</poID> <items> <itemname>Copier Paper</itemname> <price>10</price> <quantity>2</quantity> </items> <items> <itemname>Toner</itemname> <price>920</price> <quantity>1</quantity> </items> <shipTo> <street>1 Main Street</street> <city>Beverly Hills</city> <state>CA</state> <zipCode>90210</zipCode> </shipTo> </tns:PurchaseOrderDocument></pre>	<pre>HTTP/1.1 200 OK X-Powered-By: Servlet/2.5 Content-Type: text/xml Date: Fri, 21 Jul 2006 17:07:15 GMT Connection: close <?xml version="1.0" encoding="UTF-8"?> <ns2:Status xmlns:ns2="urn:Status" xmlns:ns3="urn:PurchaseOrderDocument" xmlns:ns4="urn:POProcessingFault"> <orderid>ABC1153501634787</orderid> <timestamp>Fri Jul 21 13:07:14 EDT 2006</timestamp> </ns2:Status></pre>	<pre>public PurchaseOrderStatus acceptPO(PurchaseOrder order)</pre>

71

Example (2)



Read	<pre>GET /restfulwebservice-war/poservice/ABC1153501634787 HTTP/1.0 Connection: close Content-Type: text/xml</pre>	<pre>HTTP/1.1 200 OK X-Powered-By: Servlet/2.5 Content-Type: text/xml Connection: close <?xml version="1.0" encoding="UTF-8"?><ns3:PurchaseOrderDocument xmlns:ns3="urn:PurchaseOrderDocument" xmlns:ns2="urn:Status" xmlns:ns4="urn:POProcessingFault"><billTo><street>1 Main Street</street> <city>Beverly Hills</city><state>CA</state> <zipCode>90210</zipCode></billTo> <createDate>2006-07-21T13:08:37.505-04:00</createDate> <items><itemname>Copier Paper</itemname> <price>10</price><quantity>2</quantity></items> <items><itemname>Toner</itemname><price>920</price> <quantity>1</quantity></items> <poID>/ABC1153501634787</poID><shipTo><street>1 Main Street</street><city>Beverly Hills</city> <state>CA</state><zipCode>90210</zipCode></shipTo> </ns3:PurchaseOrderDocument></pre>	<pre>public PurchaseOrder retrievePO (String orderId)</pre>
	<pre>GET /restfulwebservice-war/poservice/ HTTP/1.1 Connection: keep-alive</pre>	<pre>HTTP/1.1 400 Bad Request X-Powered-By: Servlet/2.5 Content-Type: text/xml <?xml version="1.0" encoding="UTF-8"?><ns4:POProcessingFault xmlns:ns4="urn:POProcessingFault" xmlns:ns2="urn:Status" xmlns:ns3="urn:PurchaseOrderDocument"> <message>Unable to retrieve the order associated with the orderId you specified</message> </ns4:POProcessingFault></pre>	<pre>Indicates a problem finding the order</pre>

72

Example (3)



```
Update PUT /restfulwebservice-war/poservice/ HTTP/1.0
Connection: close
Content-Type: text/xml
Content-Length: 620
Pragma: no-cache

<tns:PurchaseOrderDocument
xmlns:tns="urn:PurchaseOrderDocument">
<billTo>
<street>1 Main Street</street>
<city>Beverly Hills</city>
<state>CA</state>
<zipCode>90210</zipCode>
</billTo>
<createDate>2004-03-27T12:21:02.055-05:00</createDate>
<poID>ABC-CO-19282</poID>
<items>
<itemname>Copier Paper</itemname>
<price>10</price>
<quantity>2</quantity>
</items>
<items>
<itemname>Toner</itemname>
<price>920</price>
<quantity>1</quantity>
</items>
<shipTo>
<street>1 Main Street</street>
<city>Beverly Hills</city>
<state>CA</state>
<zipCode>90210</zipCode>
</shipTo>
</tns:PurchaseOrderDocument>

HTTP/1.1 200 OK
X-Powered-By: Servlet/2.5
Content-Type: text/xml

<?xml version="1.0" encoding="UTF-8"?><ns3:PurchaseOrderDocument
xmlns:ns3="urn:PurchaseOrderDocument"
xmlns:ns2="urn:Status"
xmlns:ns4="urn:POProcessingFault">
<billTo><street>1 Main Street</street><city>Beverly
Hills</city><state>CA</state><zipCode>90210</zipCode>
</billTo>
<createDate>2004-03-27T12:21:02.055-05:00</createDate>
<items><itemname>Copier Paper</itemname>
<price>10</price><quantity>2</quantity></items>
<items><itemname>Toner</itemname><price>920</price>
<quantity>1</quantity></items>
<poID>ABC-CO-19282</poID><shipTo><street>1 Main
Street</street><city>Beverly Hills</city>
<state>CA</state><zipCode>90210</zipCode></shipTo>
</ns3:PurchaseOrderDocument>

public PurchaseOrder
updatePO(PurchaseOrder
order)

Delete DELETE /restfulwebservice-war/poservice/ABC-CO-19282
HTTP/1.0
Connection: close
Content-Type: text/xml
Content-Length: 0
Pragma: no-cache

HTTP/1.1 200 OK
X-Powered-By: Servlet/2.5
Content-Type: text/xml
Date: Fri, 21 Jul 2006 17:10:38 GMT
Server: Sun Java System Application Server Platform
Edition 9.1
Connection: close

<?xml version="1.0" encoding="UTF-8"?>

public void
cancelPO(String
orderId)
```

Why so trendy ?



- Easy and lightweight
- Amazon, Yahoo, Google offer their Web services as RESTful
- ... but nothing really new for us, basically the same abstractions apply, you can consider the operations as a whole or you can start modeling the data flowing through the service



References

- [ACKM04] - G. Alonso, F. Casati, H. Kuno, V. Machiraju: *Web Services. Concepts, Architectures and Applications*. Springer-Verlag 2004
- [VLDBJ01] - F. Casati, M.C. Shan, D. Georgakopoulos (eds.): *Special Issue on e-Services*. VLDB Journal, 10(1), 2001
Based on the 1st International Workshop on Technologies for e-Services (VLDB-TES 2001)
- [CACM03] - M.P. Papazoglou, D. Georgakopoulos (eds.): *Special Issue on Service Oriented Computing*. Communications of the ACM 46(10), 2003
- [WSOL] - V. Tosic, B. Pagurek, K. Patel, B. Esfandiari, W. Ma: *Management Applications of the Web Service Offerings Language (WSOL)*. To be published in Information Systems, Elsevier, 2004.
An early version of this paper was published in Proc. of CAiSE'03, LNCS 2681, pp. 468-484, 2003
- [Benatallah et al IJCIS04] - B. Benatallah, F. Casati, H. Skogsrud, F. Toumani: *Abstracting and Enforcing Web Service Protocols*, International Journal of Cooperative Information Systems (IJCIS), 13(4), 2004

75



References

- [Baina et al CAISE04] K. Baina, B. Benatallah, F. Casati, F. Toumani: *Model-driven Web Service Development*, Proc. of CAiSE'04, LNCS 3084, 2004
- [Berardi et al ICSOC03] - D. Berardi, D. Calvanese, G. De Giacomo, M. Lenzerini, M. Mecella: *Proc. of ICSOC'03*, LNCS 2910, 2004
- [ebpml] - Jean-Jacques Dubray: *the ebPML.org Web Site*, <http://www.ebpml.org/>
- [DAML-S] - DAML Semantic Web Services, <http://www.daml.org/services>

76



References

- [WS-Policy] - Web Services Policy Framework (WS-Policy), September 2004, <http://www-106.ibm.com/developerworks/library/specification/ws-policyfram/>
- [WSCL] - Web Services Conversation Language (WSCL) 1.0. W3C Note, 14 March 2002, <http://www.w3.org/TR/wscl10/>
- [WSLA] - A. Dan, D. Davis et al: Web Services On Demand: WSLA-driven Automated Management. IBM Systems Journal, 43(1), 2004
- [ebXML] - Electronic Business using eXtensible Markup Language, <http://www.ebxml.org/>
- [OASIS] - Organization for the Advancement of Structured Information Standards, <http://www.oasis-open.org/home/index.php>
- [WSDL] - R. Chinnici, M. Gudgin, J.J. Moreau, J. Schlimmer, and S. Weerawarana, Web Services Description Language (WSDL) 2.0, Available on line: <http://www.w3.org/TR/wsdl20>, 2003, W3C Working Draft.
- [BPEL4WS] - T. Andrews, F. Curbera, H. Dholakia, Y. Goland, J. Klein, F. Leymann, K. Liu, D. Roller, D. Smith, S. Thatte, I. Trickovic, and S. Weerawarana, Business Process Execution Language for Web Services (BPEL4WS) -Version 1.1, <http://www-106.ibm.com/developerworks/library/ws-bpel/>, 2004

77



References

- [WS-CDL] - N. Kavantzaz, D. Burdett, G. Ritzinger, Y. Lafon: Web Services Choreography Description Language (WS-CDL) Version 1.0, Available on line at: <http://www.w3.org/TR/ws-cdl-10/>, W3C Working Draft.
- [UDDI] - Universal Discovery, Description and Integration, <http://www.uddi.org/>
- [WS-C] - Web Services Coordination (WS-C), <http://www-106.ibm.com/developerworks/library/ws-coor/>
- [WS-T] - Web Services Transaction (WS-Transaction), <http://www-106.ibm.com/developerworks/webservices/library/ws-transpec/>
- [WS-CAF] - Web Services Composite Application Framework, <http://developers.sun.com/techtopics/webservices/wscaf/>

78