



***Siena: Light-weight Artifact-Centric Business
Process Model and Execution Environment***

Terry Heath
Senior Software Engineer
IBM T.J. Watson Research Center

Siena Demo

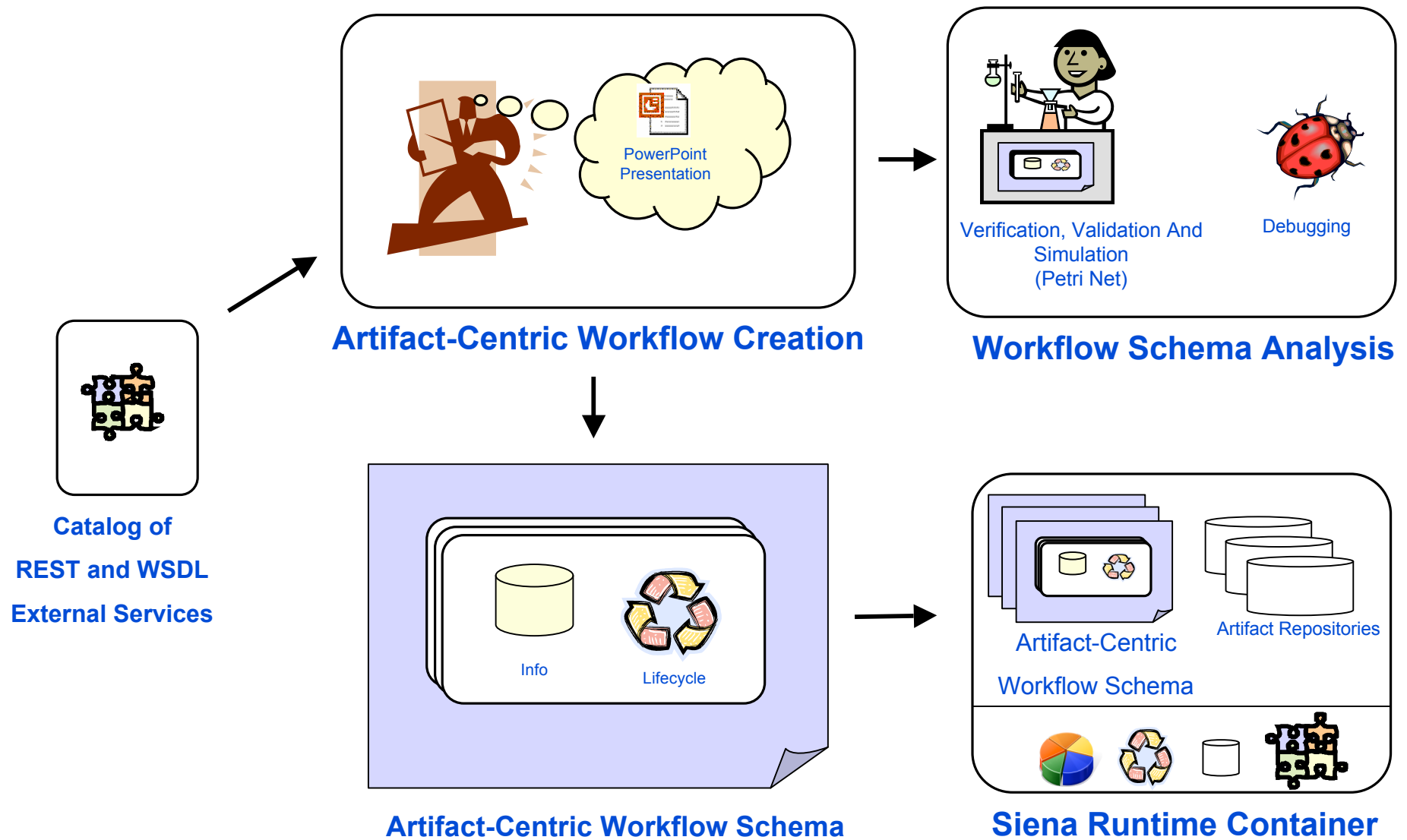
❑ Siena: A tool that supports

- Design of artifact schema using a GUI (based on PowerPoint)
- Transformation of the artifact schema from PowerPoint into XML
- Direct deployment and execution of the artifact schema

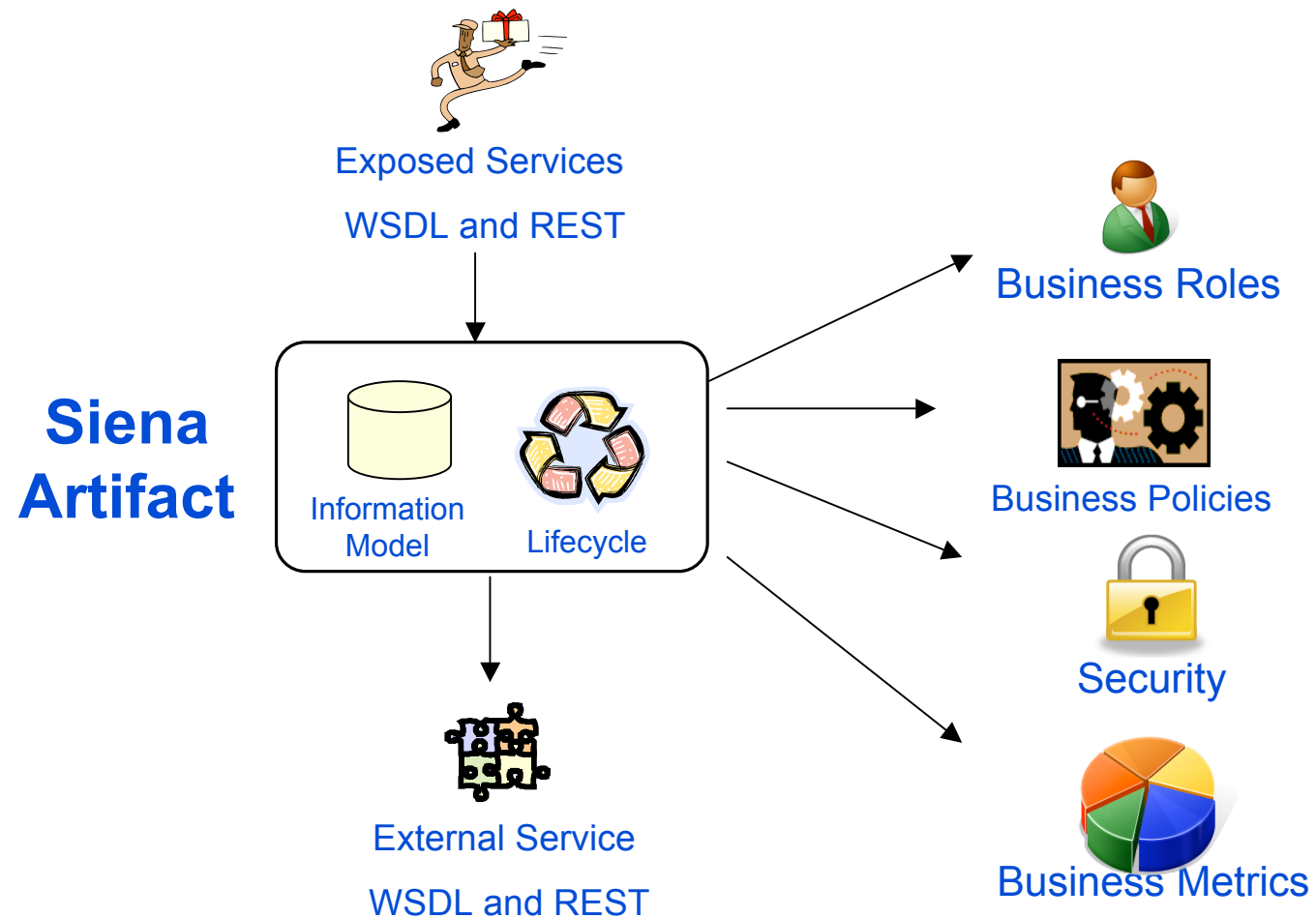
❑ The Demo: Simplified Book Seller Example

- Describe an artifact schema
- Describe the transformation and deployment step
- Execute the artifact schema
- Modify the artifact schema, and execute again

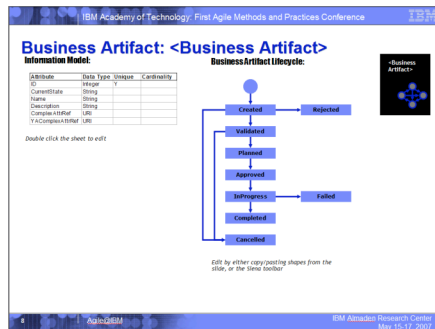
Siena Usage Overview



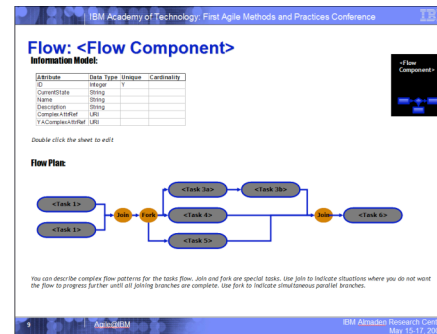
Siena Core Concept: The Artifact



Artifact Schema Creation (Template Driven Modeling)



Artifact Information Model and Lifecycle Model

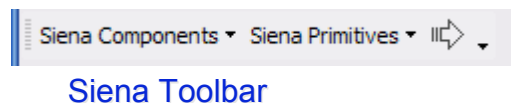


Exposed Service

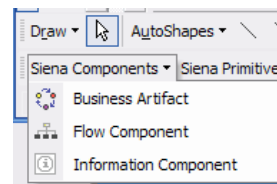


External Service

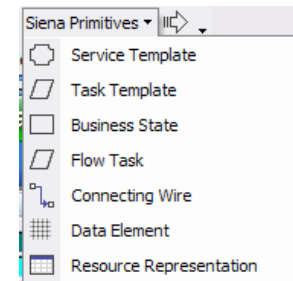
Template Slides



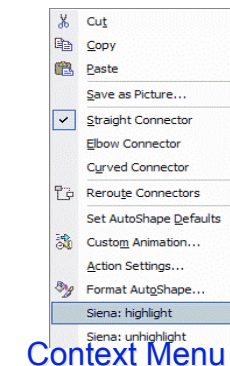
Siena Toolbar



Siena Component Menu



Siena Primitive Menu



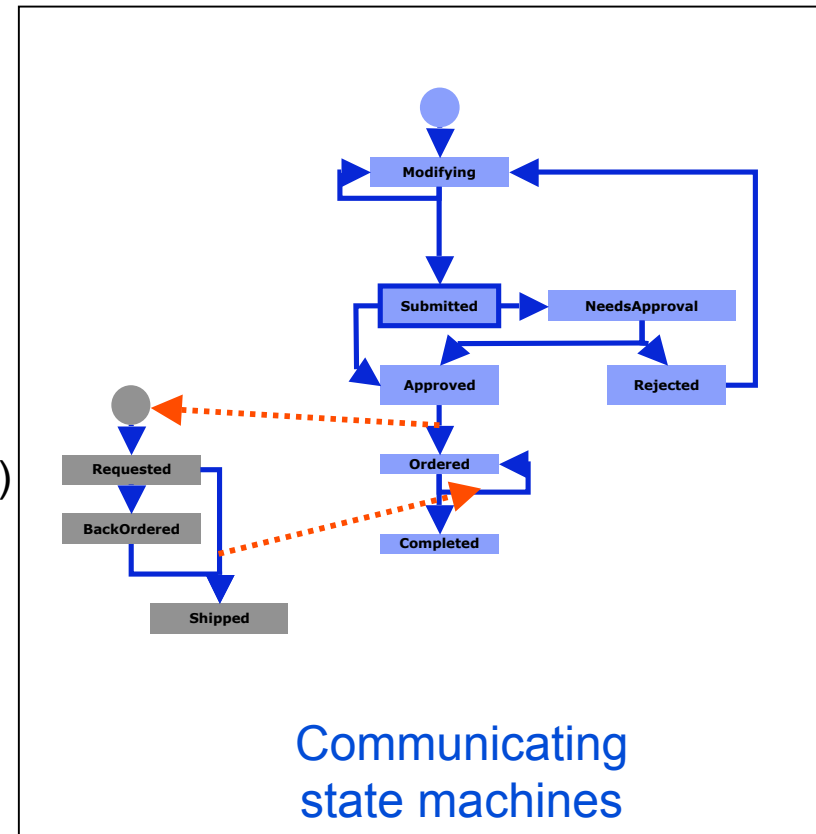
Context Menu

PowerPoint Add-in Toolbars and Menus for Siena

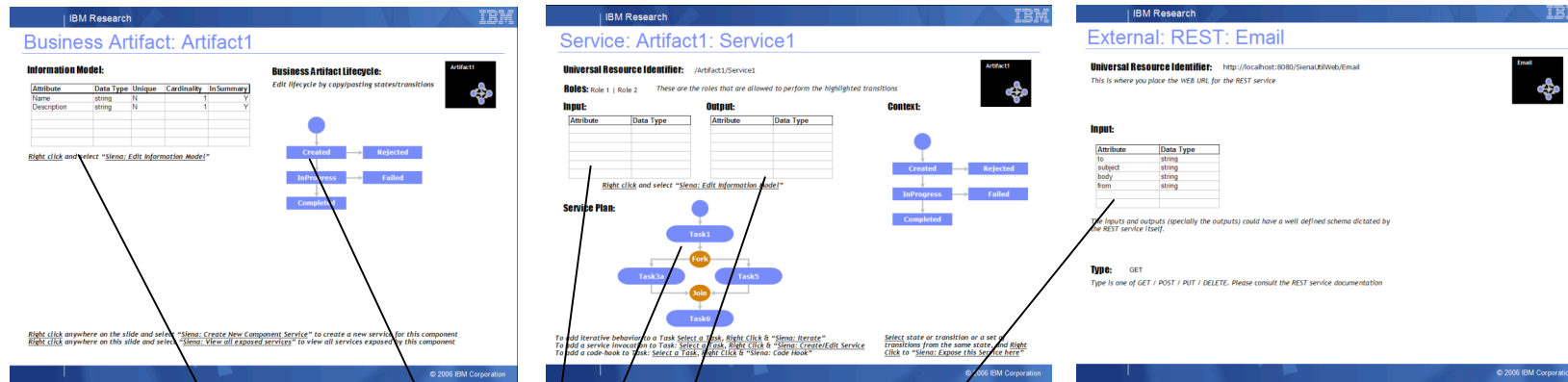
Live Demo Part 1 Artifact Schema Walkthrough

❑ Book Seller Example

- Artifacts
 - **Book Order**
 - ✓ Review attributes
 - ✓ Review Lifecycle
 - ✓ Review Exposed Services
 - **Shipment** (Multiple Shipments per Book Order)
 - ✓ Review attribute
 - ✓ Review Lifecycle
 - ✓ Review Exposed Services
- External Services
 - Book Bundling Service
 - Credit Score (We will add this in the demo)
 - Email



Demo Part 2: Transformation from PPT to XML and XSDs

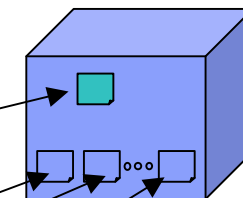
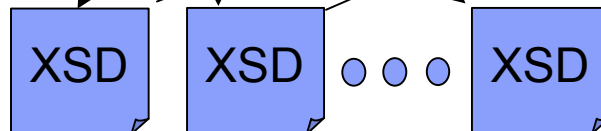


**Siena
Meta-Model
as XSD**

**Artifact
Schema
as XML**

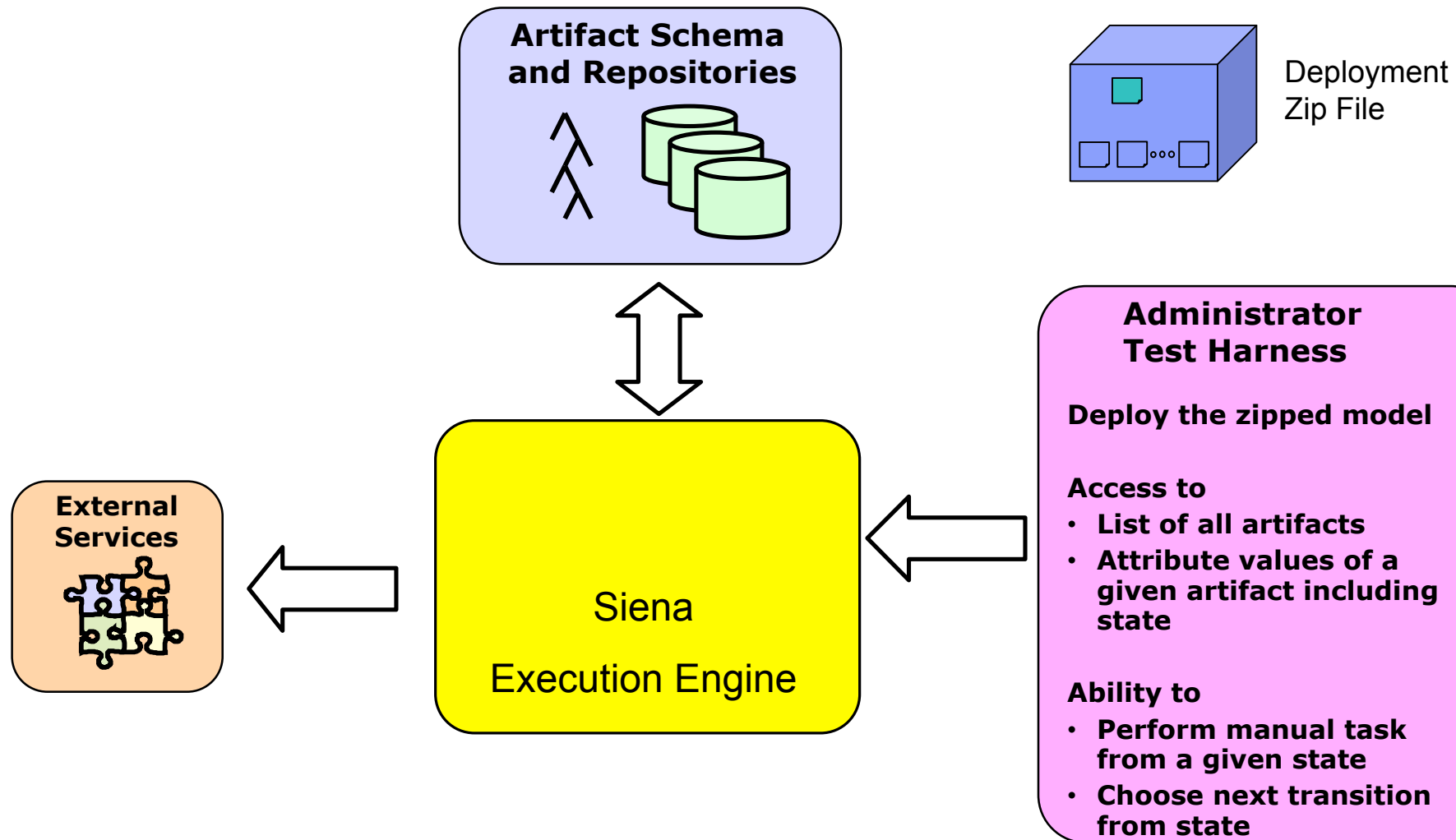
- Siena (Application) XML
 - External Services
 - Artifact
 - Information Model
 - Lifecycle Model
 - ...

- Service I/O XSDs
- Artifact XSDs



**Deployment
Zip File**

Demo Part 2: Deploy and Execute Using Siena Administrator Test Harness



Live Demo Part 2

- ☐ Transform the Artifact Schema from PowerPoint
- ☐ Deploy the Artifact Schema using the Administrator Test Harness
- ☐ Execute the Artifact Schema using the Administrator Test Harness

Live Demo Part 3

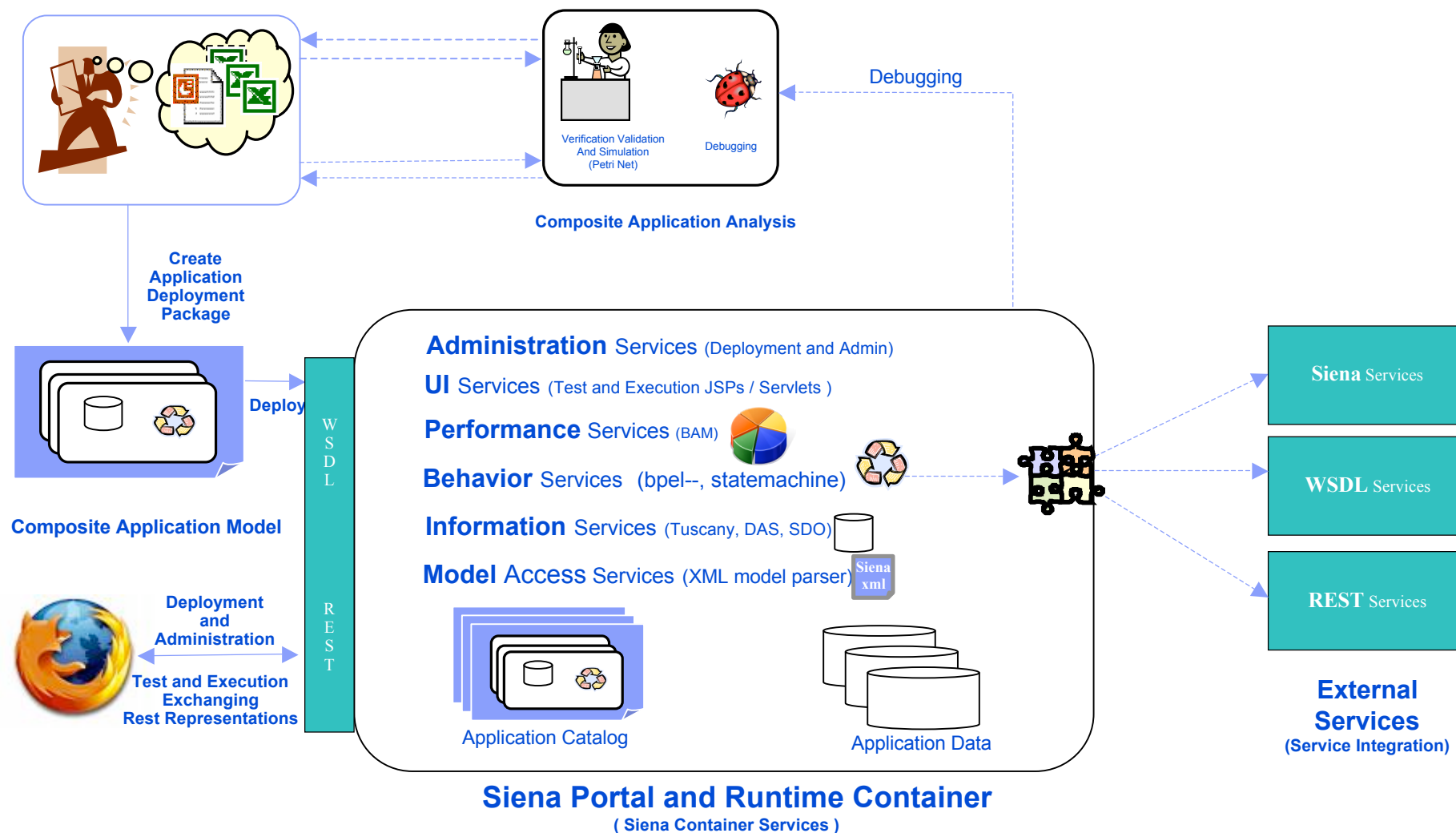
❑ Modify Artifact Schema

- Add Payment Feature
 - Add Complex Type to hold Payment details
 - Add “paymentDetails” attribute to Book Order Data model
 - Add Service for Submitting Payment Details
 - Assign new payment details to Book Order

- Add Credit Check Feature
 - Add “creditScore” Data Model attribute to Artifact data model.
 - Add GetCreditScore external service from Catalog
 - Choreograph GetCreditScore into SubmitOrder Service
 - Add Exit Conditions on Submitted State
 - ✓ 1st condition to auto approve Book Order if creditScore \geq 600
 - ✓ 2nd condition to determine the need for manual approval if creditScore $<$ 600

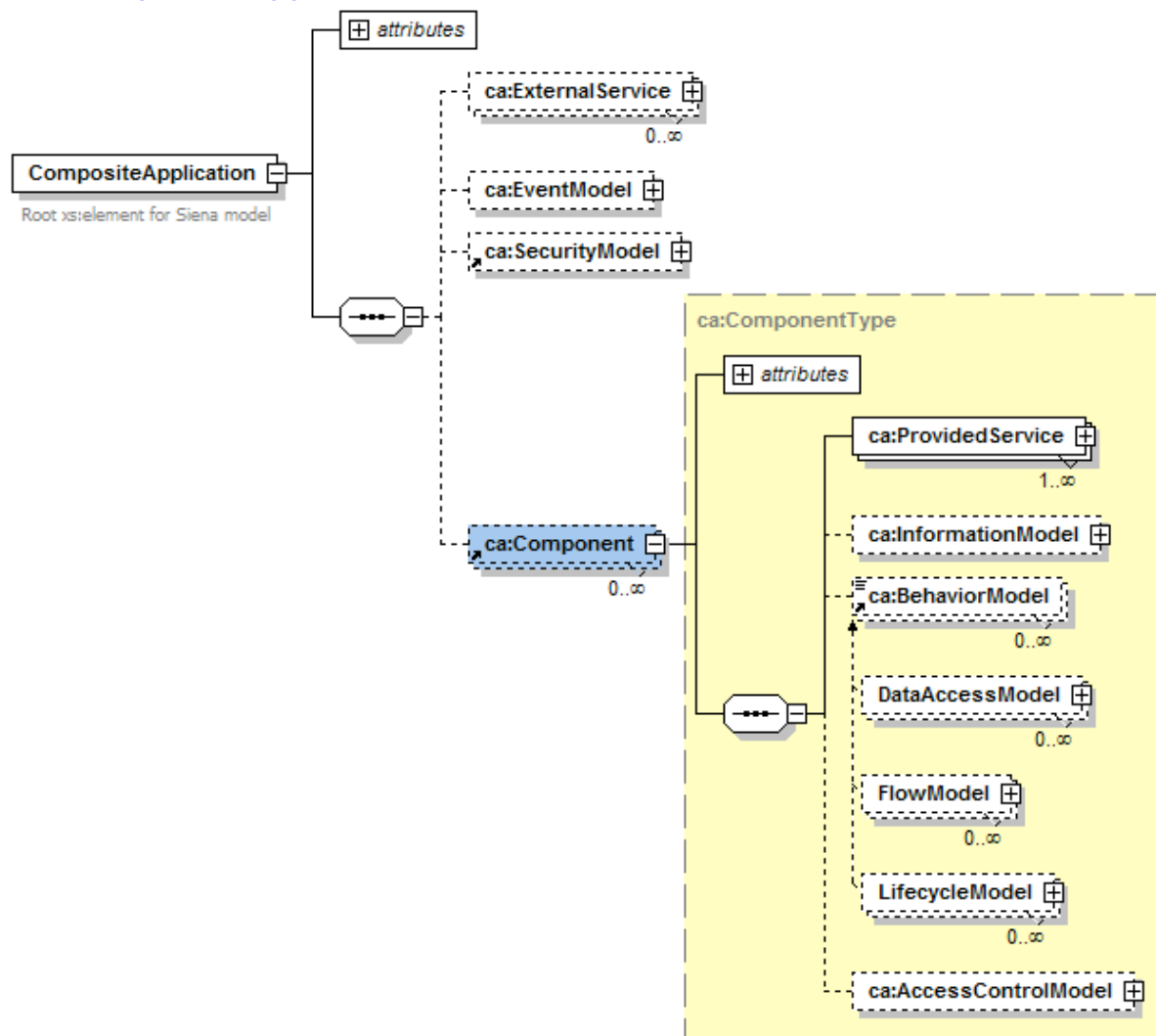
Backup Slides

Siena Architecture



Siena Schema

Composite Application



Siena Administration Console With Monitoring

Composite Application
Navigator

Metrics and Monitoring

