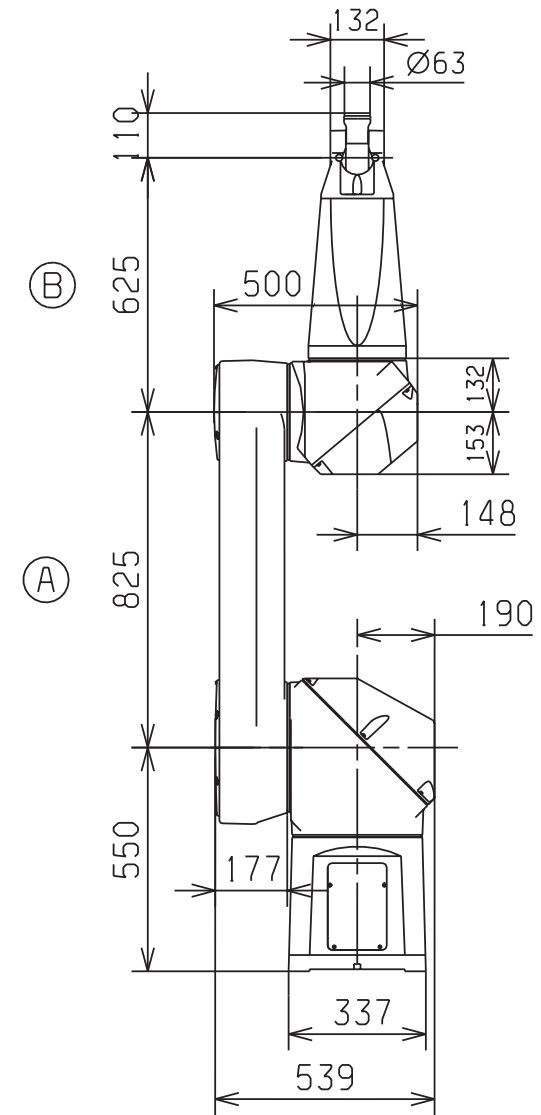
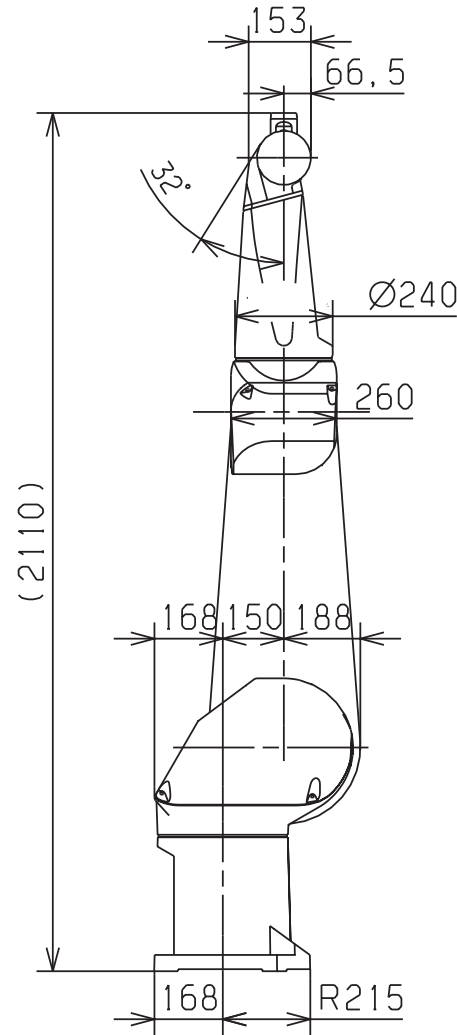
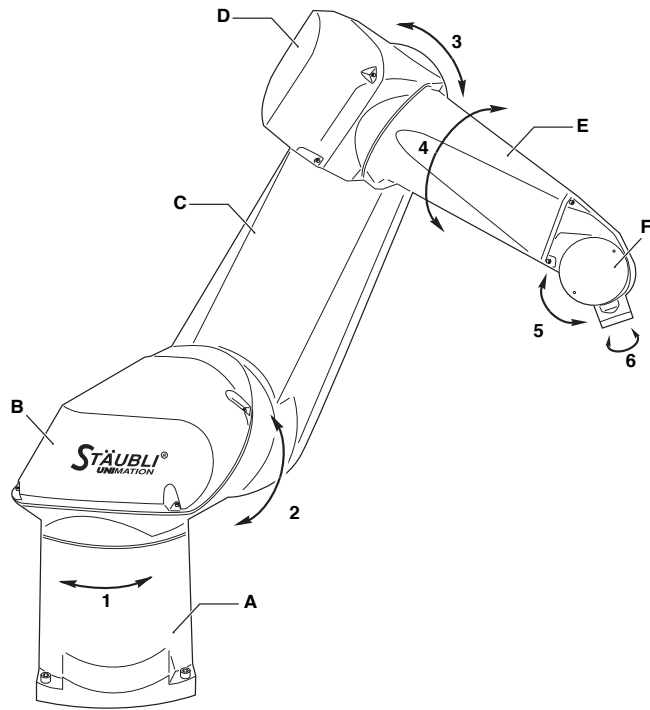


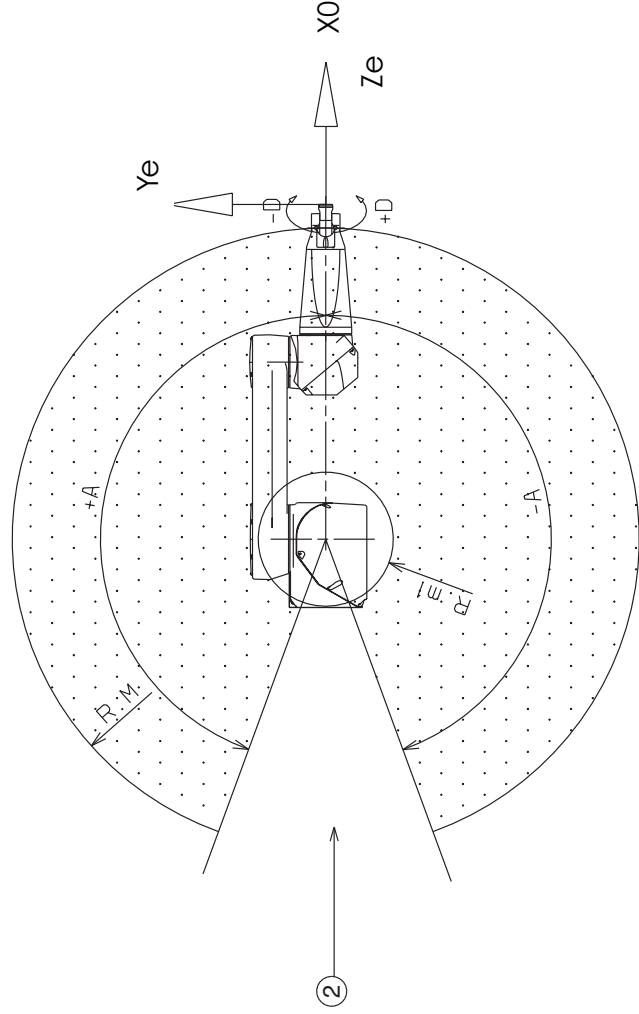
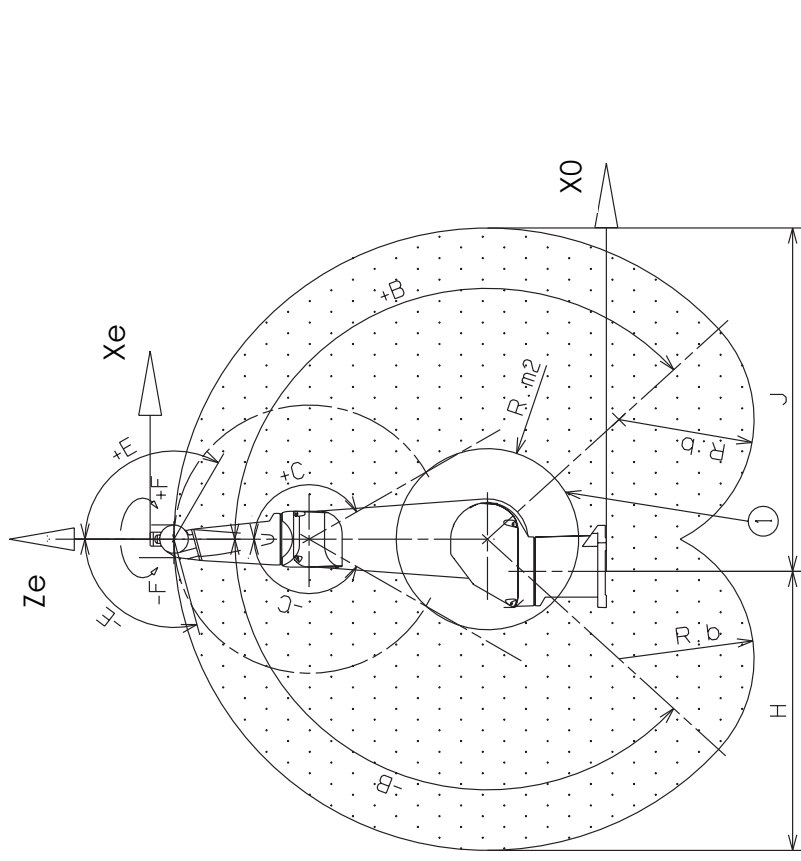
# Stäubli RX 160 - DH Frame assignment and table

name: \_\_\_\_\_



$i$	$\alpha_i$	$a_i$	$d_i$	$\theta_i$
1				
2				
3				
4				
5				
6				

# Stäubli RX 160 - workspace



Motion range	
Axis 1 (A)	$\pm 160^\circ$
Axis 2 (B)	$\pm 137,5^\circ$
Axis 3 (C)	$\pm 150^\circ$
Axis 4 (D)	$\pm 270^\circ$
Axis 5 (E)	$+120^\circ/-105^\circ$
Axis 6 (F)	$\pm 270^\circ$